

COPY

EXECUTION COPY

**SECOND AMENDMENT
to the
AMENDED CENTRAL FLORIDA OPERATING AND MANAGEMENT AGREEMENT**

THIS SECOND AMENDMENT TO THE AMENDED CENTRAL FLORIDA OPERATING AND MANAGEMENT AGREEMENT (this "Second Amendment"), made as of October 5th, 2011 (the "Second Amendment Effective Date"), by and between STATE OF FLORIDA, DEPARTMENT OF TRANSPORTATION, ("State") and CSX TRANSPORTATION, INC., ("CSXT"), amends that certain AMENDED CENTRAL FLORIDA OPERATING AND MANAGEMENT AGREEMENT dated as of March 29, 2010, by and between State and CSXT (the "Amended CFOMA").

WHEREAS, the original CFOMA was executed on November 30, 2007 (the "Original CFOMA"); and

WHEREAS, said Original CFOMA was superseded by the Amended CFOMA; and

WHEREAS, the Amended CFOMA was amended by that certain First Amendment to the CFOMA dated December 20, 2010 (the "First Amendment"); and

WHEREAS, as set forth in Appendix A, the Original CFOMA, as amended by the Amended CFOMA, the First Amendment and this Second Amendment, shall be referred to as the CFOMA; and

WHEREAS, the Parties desire to now further amend the CFOMA as set forth herein.

NOW, THEREFORE, in consideration of the premises and of the mutual covenants hereinafter set forth, the Parties hereto, intending to be legally bound, agree as follows:

1. Section 8(d)(ii)(A) and (B) of the CFOMA are hereby deleted and restated in their entirety as follows:

“(A) Between Milepost A749.61 and Milepost A813.82, all platforms shall be eight inches (8”) ATR and provide a lateral clearance measured from the centerline of the track of not less than five feet, one inch (5’1”). A twenty-five inch (25”) ATR mini-hi platform located on the eight inch (8”) ATR platforms shall have a lateral clearance measured from the centerline of the track of not less than seven feet, six inches (7’6”).

(B) Intentionally left blank.

2. Section 1(b) of the CFOMA is hereby amended to add the following sentence at the end of the paragraph:

“Notwithstanding, CSXT shall have the right to enter the State Property for access to monitoring wells located therein and to provide CSXT such access as is necessary to take any actions within the State Property required of CSXT by any applicable federal, state and local laws, ordinances, rules, regulations, orders, or requirements.”

3. The last sentence of 4(a)(i) of the CFOMA is hereby deleted and restated in its entirety as follows: “Exhibits A, B and C have been agreed upon by the parties and are attached hereto as Exhibits A, B and C and are incorporated herein and shall replace Exhibits A, B and C to the First Amendment.

4. The second word in Paragraph 17 of the First Amendment is changed from “Second” to “First”.


6. This Second Amendment may be executed in two or more counterparts, each of which shall be deemed an original, but all of which together shall constitute but one and the same instrument.

7. Other than as expressly set forth above, the terms and conditions of the CFOMA remain in full force and effect.

[signature page follows]

IN WITNESS WHEREOF, CSX TRANSPORTATION, INC. and STATE OF FLORIDA, DEPARTMENT OF TRANSPORTATION, pursuant to due corporate and statutory authority, have caused their names to be signed hereto by officer(s) or official(s) hereunto duly authorized as of the Second Amendment Effective Date.

CSX TRANSPORTATION, INC., a Virginia corporation

By: 
(Signed Name)

Print Name: Peter J. Shutz

Its: Authorized Agent

STATE OF FLORIDA DEPARTMENT OF TRANSPORTATION

By: _____
(Signed Name)

Print Name: Ananth Prasad

Its: Secretary

LEGAL REVIEW:

Special Counsel

APPROVED AS TO FINANCIAL TERMS
AND FUNDS ARE PROGRAMMED

Office of the Comptroller

[signature page of Second Amendment to the Amended CFOMA]

IN WITNESS WHEREOF, CSX TRANSPORTATION, INC. and STATE OF FLORIDA, DEPARTMENT OF TRANSPORTATION, pursuant to due corporate and statutory authority, have caused their names to be signed hereto by officer(s) or official(s) hereunto duly authorized as of the Second Amendment Effective Date.


CSX TRANSPORTATION, INC., a Virginia corporation

By: _____
(Signed Name)

Print Name: Peter J. Shudtz

Its: Authorized Agent

STATE OF FLORIDA DEPARTMENT OF TRANSPORTATION

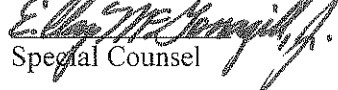
By: 

(Signed Name)

Print Name: Ananth Prasad, P.E.

Its: Secretary

LEGAL REVIEW:


Special Counsel

APPROVED AS TO FINANCIAL TERMS
AND FUNDS ARE PROGRAMMED



Office of the Comptroller

[signature page of Second Amendment to the Amended CFOMA]

Exhibit A

AGREEMENT #	INDUSTRY	CSX OWNERSHIP IN SIDETRACK	SWITCHES	MILEPOST
CSX047258	Pierce Hardy	150 ft	1	A749.85
CSX047820	Conrad Yelvington	150 ft	1	A749.93
CSX048041	Conrad Yelvington	300 ft	2	A761.17
CSX043611	Conrad Yelvington	606 ft	1	A766.11
SCL023104	Arthur Green	150 ft	1	A767.29
CSX673992	Old Castle APG dba Harwood Brick	150ft	1	A778.98
CSX003430	Conrad Yelvington	150 ft	1	A791-792
CSX011541	Michigan Properties	150 ft	1	A792.26
CSX035718	Southern Warehouse	150 ft	1	A792.46
CSX007498	Southern Warehouse	245 ft	1	A792.95
CSX007497	Southgate Properties	488 ft (Track 2) 150 ft (Track 10)	1	A792.9
CSX660719	Boise Cascade	306 ft	2	A793.3
CSX659297	New Venture Land Trust.	300 ft	1	A794.56
ACL007168	Inland Paperboard	150 ft	1	A795.3
SCL008384	Sewell Plastics	260 ft	1	A796.19
SCL030250	Sewell Plastics	150 ft	1	A796.27
ACL007815001	Howard Fertilizer	150 ft	1	A798.8
SCL031044	Chemcentral	628 ft	1	A797
CSX056841	Corridor Materials	223 ft (Track 798.8(2)) 280 ft (Track 798.8(2)) 205 ft (Crossover 1)	3	A798.78
CSX003449	Airport Industrial	361 ft	1	A798.83
SBD004200	James Strates	136.4 ft	1	A799.12
SBD003282	Orlando Utilities	685 ft (north leg) 1179 ft (south leg)	1 1	A800.58
CSX056942	Cornerstone Logistics	150	1	A801.98
CSX003475	Ewing Irrigation	280 ft	1	A804.95
CSX660427	Avatar Properties	160 ft	1	A813.79

Exhibit B

AGREEMENT #	INDUSTRY	INDUSTRY OWNERSHIP WITHIN R.O.W.	MILEPOST
CSX047258	Pierce Hardy	277 ft	A749.85
CSX047820	Conrad Yelvington	5067 ft	A749.93
CSX048041	Conrad Yelvington	2106 ft	A761.17
CSX673992	Old Castle APG dba Harwood Brick	508 ft	A 778.98
CSX003430	Conrad Yelvington	182 ft	A791-A792
CSX007498	Southern Warehouse	213 ft	A792.95
CSX 007497	Southgate Properties	721 ft	A792.90
SCL008384	Sewell Plastics	380 ft	A 796.19
SCL030250	Sewell Plastics	150 ft	A796.27
CSX007815	Inland Paperboard	405 ft	A795.30
ACL007815	Howard Fertilizer	95 ft	A798.80
ACL007073	James Strates	213.5 ft	A799.12
CSX043611	Conrad Yelvington	2000 ft	A766.11
CSX056841	Corridor Materials	11224 ft	A798.78
CSX056942	Cornerstone Logistics	632 ft	A801.98
CSX660427	Avatar Properties	230 ft	A813.79

Exhibit C

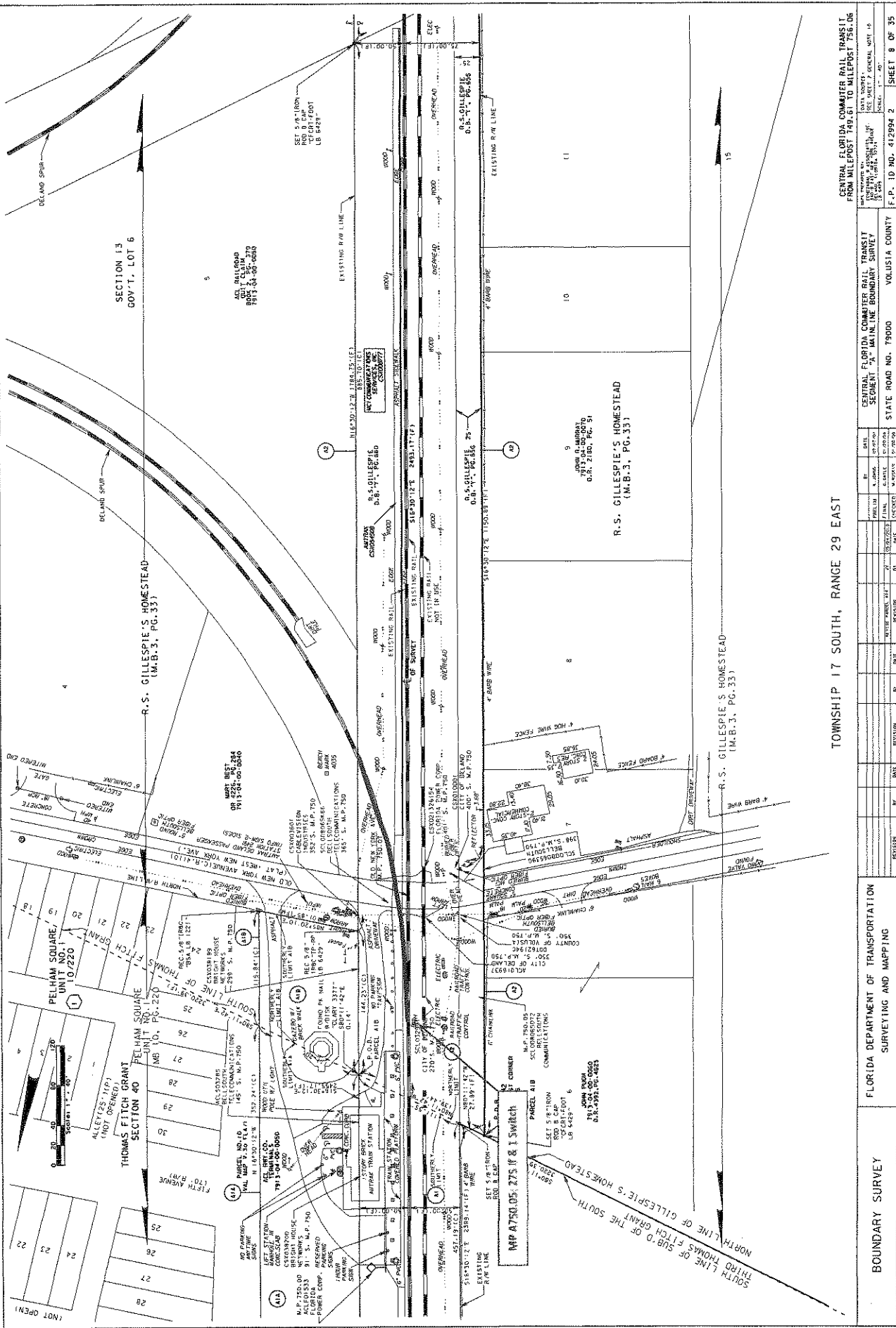
Conveyed Sidetracks

Length of track measured between point of switch and corridor boundary line
 Certain tracks will be reconfigured as a result of the CFCRT Project and the Exhibit will be modified accordingly.

Location	Facilities
Rand Yard	North: 1500 lf and 3 switches
	Mid: 105 lf and 1 switch
	South: 1500 lf and 4 switches
Kaley Yard	North: 150 lf and 1 switch
	South: 140 lf and 1 switch
Pineloch Yard	North: 160 lf and 1 switch
	South: 370 lf and 2 switches
Taft Yard	North: 1860 lf and 1 switch
	South: 100 lf and 1 switch
	200 lf and 1 switch
Contractor/Team Track:	515 lf and 1 switch
	90 lf and 1 switch
Intermodal Wye Track	North: 280 lf and 1 switch
	South: 303 lf and 1 switch
Sanford Sidetrack(s)	East: 160 lf and 1 switch
	West: 110 lf and 1 switch
Deland Spur:	North: 275 lf and 1 switch
	South: 340 lf and 1 switch
Aloma Spur	1100 lf (3 tracks) and
	3 switches

Note: Drawings defining the referenced trackage are attached hereto and incorporated herein as a part of this Exhibit.

Copyright © 2015 by Esri. All rights reserved. This software is the property of Esri and is licensed under the Esri Software License Agreement.



TOWNSHIP 17 SOUTH, RANGE 29 EAST

CENTRAL FLORIDA COMBATER RAIL TRANSIT
 FROM MILEPOST 749.61 TO MILEPOST 756.06

CENTRAL FLORIDA COMBATER RAIL TRANSIT
 SEGMENT "A" MAINLINE BOUNDARY SURVEY
 STATE ROAD NO. 79000 VOLUSTA COUNTY

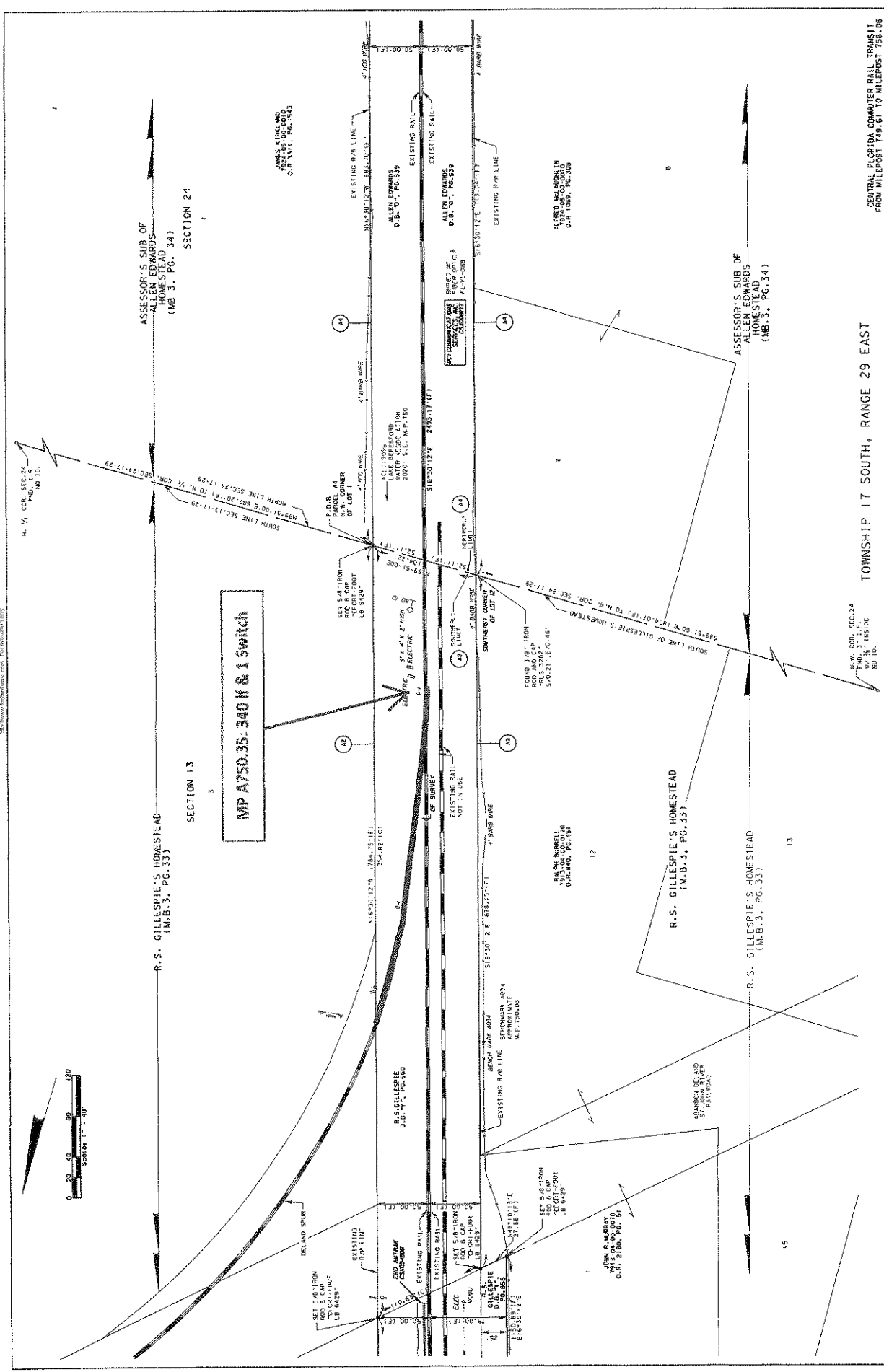
DATE	BY	SCALE	REVISION	NO.
APRIL 14, 2015	J. JAMES	AS SHOWN		1
				2
				3
				4
				5
				6
				7
				8
				9
				10
				11
				12
				13
				14
				15
				16
				17
				18
				19
				20
				21
				22
				23
				24
				25
				26
				27
				28
				29
				30

FLORIDA DEPARTMENT OF TRANSPORTATION
 SURVEYING AND MAPPING

BOUNDARY SURVEY

F.P. 1D NO. 412994 2 SHEET 8 OF 35

Generated by AutoCAD Civil 3D Survey Software
 File Name: 24042024.ctb
 Plot Date: 11/14/2024



SECTION 13

SECTION 24

MP A750.35:340 If & 1 Switch

TOWNSHIP 17 SOUTH, RANGE 29 EAST

CENTRAL FLORIDA COMASTER RAIL TRANSIT
 FROM MILEPOST 749.61 TO MILEPOST 756.06

BOUNDARY SURVEY		FLORIDA DEPARTMENT OF TRANSPORTATION		SURVEYING AND MAPPING	
NO.	DESCRIPTION	DATE	BY	SCALE	PROJECT
1	BOUNDARY SURVEY	11/14/2024	J. GILLESPIE	AS SHOWN	STATE ROAD NO. 79000
2	BOUNDARY SURVEY	11/14/2024	J. GILLESPIE	AS SHOWN	STATE ROAD NO. 79000
3	BOUNDARY SURVEY	11/14/2024	J. GILLESPIE	AS SHOWN	STATE ROAD NO. 79000
4	BOUNDARY SURVEY	11/14/2024	J. GILLESPIE	AS SHOWN	STATE ROAD NO. 79000
5	BOUNDARY SURVEY	11/14/2024	J. GILLESPIE	AS SHOWN	STATE ROAD NO. 79000
6	BOUNDARY SURVEY	11/14/2024	J. GILLESPIE	AS SHOWN	STATE ROAD NO. 79000
7	BOUNDARY SURVEY	11/14/2024	J. GILLESPIE	AS SHOWN	STATE ROAD NO. 79000
8	BOUNDARY SURVEY	11/14/2024	J. GILLESPIE	AS SHOWN	STATE ROAD NO. 79000
9	BOUNDARY SURVEY	11/14/2024	J. GILLESPIE	AS SHOWN	STATE ROAD NO. 79000
10	BOUNDARY SURVEY	11/14/2024	J. GILLESPIE	AS SHOWN	STATE ROAD NO. 79000
11	BOUNDARY SURVEY	11/14/2024	J. GILLESPIE	AS SHOWN	STATE ROAD NO. 79000
12	BOUNDARY SURVEY	11/14/2024	J. GILLESPIE	AS SHOWN	STATE ROAD NO. 79000
13	BOUNDARY SURVEY	11/14/2024	J. GILLESPIE	AS SHOWN	STATE ROAD NO. 79000
14	BOUNDARY SURVEY	11/14/2024	J. GILLESPIE	AS SHOWN	STATE ROAD NO. 79000
15	BOUNDARY SURVEY	11/14/2024	J. GILLESPIE	AS SHOWN	STATE ROAD NO. 79000

FLORIDA DEPARTMENT OF TRANSPORTATION
 SURVEYING AND MAPPING

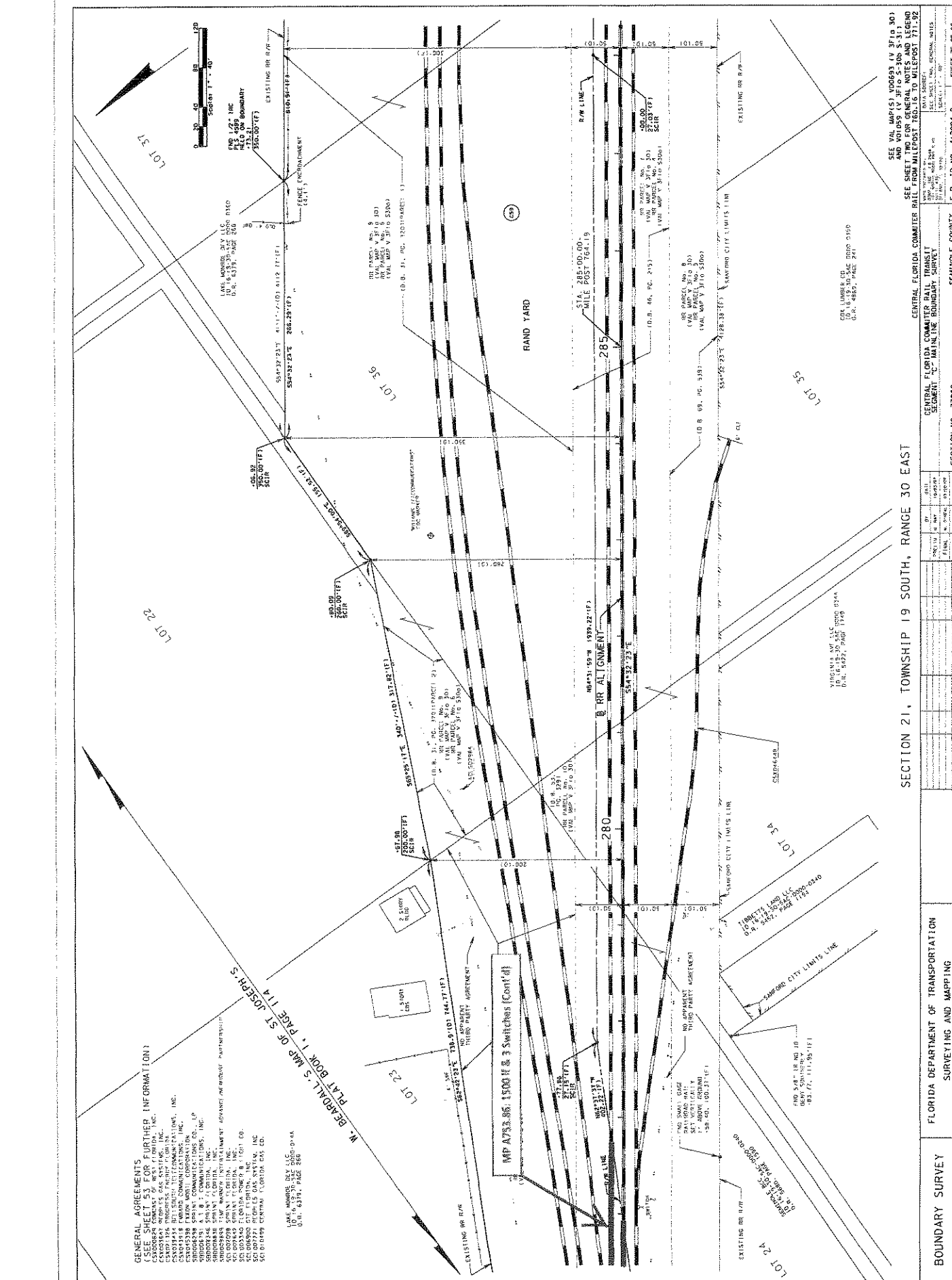
STATE ROAD NO. 79000
 VOLUSTA COUNTY

F.P. ID NO. 412994 2
 SHEET 9 OF 35

GENERAL AGREEMENTS
(SEE SHEET 53 FOR FURTHER INFORMATION)

CONDOLETS COMPANY OF FLORIDA, INC.
 15409 134TH AVENUE, SUITE 200, BOCA RATON, FL 33433
 15409 134TH AVENUE, SUITE 200, BOCA RATON, FL 33433
 15409 134TH AVENUE, SUITE 200, BOCA RATON, FL 33433
 15409 134TH AVENUE, SUITE 200, BOCA RATON, FL 33433
 15409 134TH AVENUE, SUITE 200, BOCA RATON, FL 33433
 15409 134TH AVENUE, SUITE 200, BOCA RATON, FL 33433
 15409 134TH AVENUE, SUITE 200, BOCA RATON, FL 33433
 15409 134TH AVENUE, SUITE 200, BOCA RATON, FL 33433
 15409 134TH AVENUE, SUITE 200, BOCA RATON, FL 33433
 15409 134TH AVENUE, SUITE 200, BOCA RATON, FL 33433

LAKE MONROE KEY LLC
 D.B. # 4378, PAGE 888-0-44
 15409 134TH AVENUE, SUITE 200, BOCA RATON, FL 33433
 15409 134TH AVENUE, SUITE 200, BOCA RATON, FL 33433
 15409 134TH AVENUE, SUITE 200, BOCA RATON, FL 33433
 15409 134TH AVENUE, SUITE 200, BOCA RATON, FL 33433
 15409 134TH AVENUE, SUITE 200, BOCA RATON, FL 33433
 15409 134TH AVENUE, SUITE 200, BOCA RATON, FL 33433
 15409 134TH AVENUE, SUITE 200, BOCA RATON, FL 33433
 15409 134TH AVENUE, SUITE 200, BOCA RATON, FL 33433
 15409 134TH AVENUE, SUITE 200, BOCA RATON, FL 33433
 15409 134TH AVENUE, SUITE 200, BOCA RATON, FL 33433

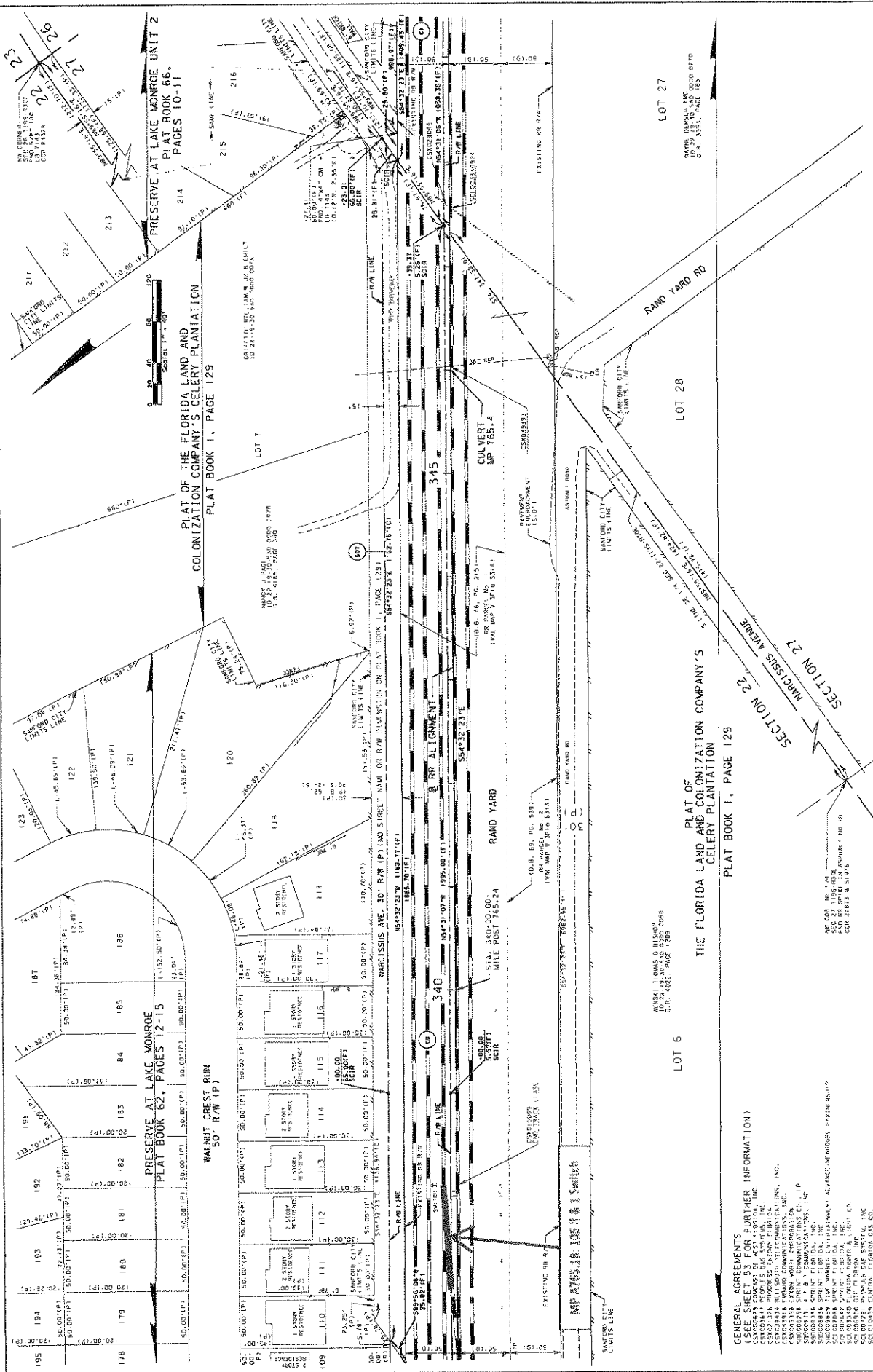


SEE MAPS 00093 (V 2710 30)
 00093 (V 2710 30)
 00093 (V 2710 30)
 00093 (V 2710 30)
 00093 (V 2710 30)
 00093 (V 2710 30)
 00093 (V 2710 30)
 00093 (V 2710 30)
 00093 (V 2710 30)
 00093 (V 2710 30)
 00093 (V 2710 30)

SEE SHEET TWO FOR GENERAL NOTES AND LEGEND
 SEE SHEET TWO FOR GENERAL NOTES AND LEGEND
 SEE SHEET TWO FOR GENERAL NOTES AND LEGEND
 SEE SHEET TWO FOR GENERAL NOTES AND LEGEND
 SEE SHEET TWO FOR GENERAL NOTES AND LEGEND
 SEE SHEET TWO FOR GENERAL NOTES AND LEGEND
 SEE SHEET TWO FOR GENERAL NOTES AND LEGEND
 SEE SHEET TWO FOR GENERAL NOTES AND LEGEND
 SEE SHEET TWO FOR GENERAL NOTES AND LEGEND
 SEE SHEET TWO FOR GENERAL NOTES AND LEGEND
 SEE SHEET TWO FOR GENERAL NOTES AND LEGEND

NO.	DATE	BY	REVISION
1			
2			
3			
4			
5			
6			
7			
8			
9			
10			
11			
12			
13			
14			
15			
16			
17			
18			
19			
20			
21			
22			
23			
24			
25			
26			
27			
28			
29			
30			
31			
32			
33			
34			
35			
36			
37			
38			
39			
40			
41			
42			
43			
44			
45			
46			
47			
48			
49			
50			

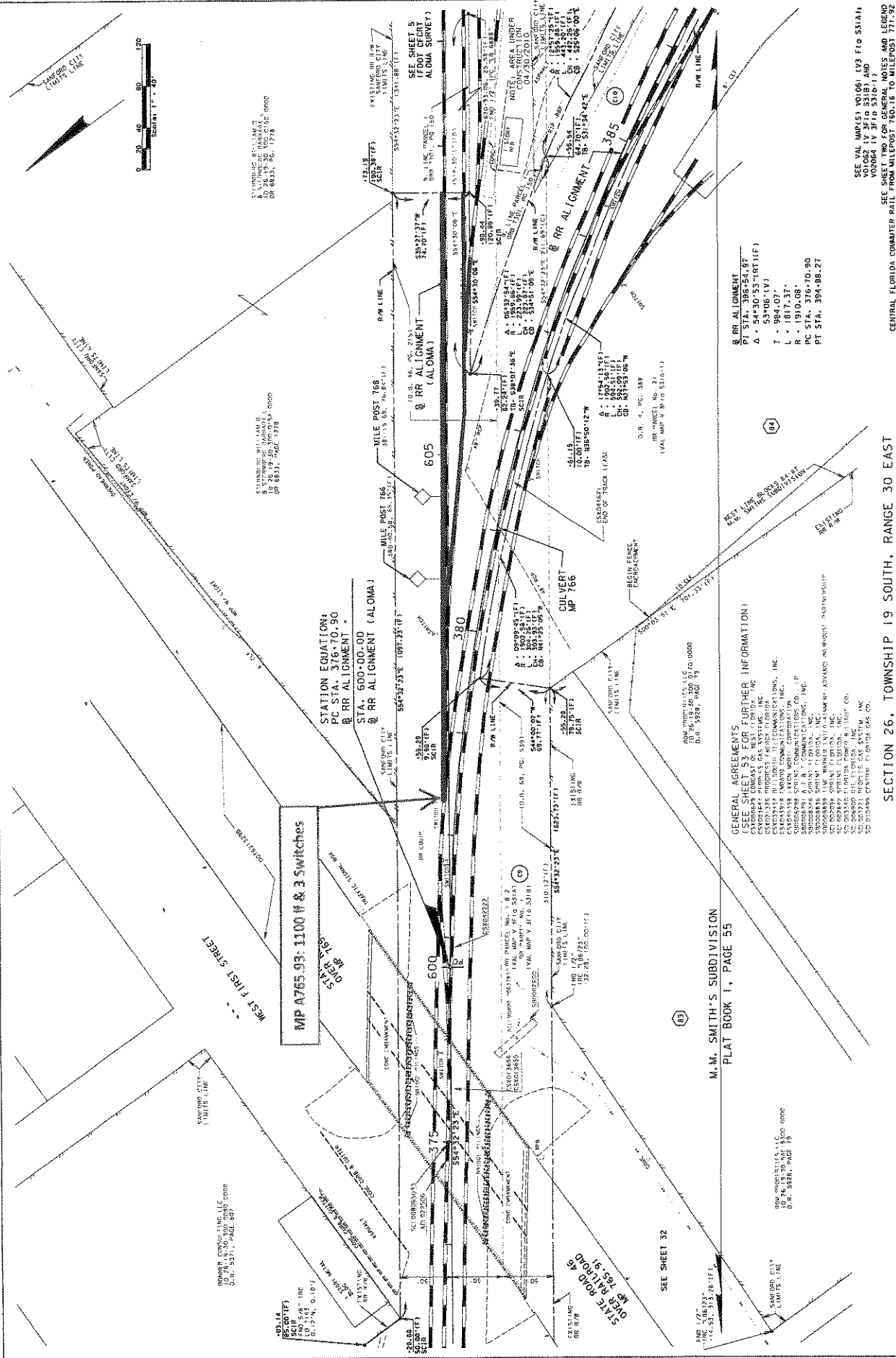
SECTION NO. 77000 SECTION NO. 412994 2 SHEET NO. OF 96
 FLORIDA DEPARTMENT OF TRANSPORTATION SEMINOLE COUNTY
 SURVEYING AND MAPPING



SEE MAP NO. 412994-2 FOR GENERAL NOTES AND LEGEND
 CENTRAL FLORIDA COMBATER RAIL FROM MILEPOST 760.15 TO MILEPOST 771.92
 CENTRAL FLORIDA COMBATER RAIL TRANSIT
 SEGMENT "C" - MAIN LINE BOUNDARY SURVEY
 SECTION NO. 77000 SECTION NO. 77000 SECTION NO. 77000
 SEMINOLE COUNTY P.P. ID NO. 412994-2 SHEET NO. 30 OF 36

GENERAL AGREEMENTS
 (SEE SHEET 53 FOR FURTHER INFORMATION)
 CROWN SURVEYING & MAPPING, INC.
 1500 N. W. 30th St., Ft. Lauderdale, FL 33309
 (954) 576-1100
 CROWN SURVEYING & MAPPING, INC.
 1500 N. W. 30th St., Ft. Lauderdale, FL 33309
 (954) 576-1100
 CROWN SURVEYING & MAPPING, INC.
 1500 N. W. 30th St., Ft. Lauderdale, FL 33309
 (954) 576-1100

NO.	DATE	DESCRIPTION	BY	DATE	REVISION	BY
1						
2						
3						
4						
5						
6						
7						
8						
9						
10						
11						
12						
13						
14						
15						
16						
17						
18						
19						
20						
21						
22						
23						
24						
25						
26						
27						
28						
29						
30						
31						
32						
33						
34						
35						
36						
37						
38						
39						
40						
41						
42						
43						
44						
45						
46						
47						
48						
49						
50						
51						
52						
53						
54						
55						
56						
57						
58						
59						
60						
61						
62						
63						
64						
65						
66						
67						
68						
69						
70						
71						
72						
73						
74						
75						
76						
77						
78						
79						
80						
81						
82						
83						
84						
85						
86						
87						
88						
89						
90						
91						
92						
93						
94						
95						
96						
97						
98						
99						
100						



SEE VAL MAP(S) V01061 (V3 F10 531A1) V01062 (V3 F10 531B1) AND V02064 (V3 F10 531C-1) FOR GENERAL INFORMATION AND LEGEND RELATIVE TO MILEPOSTS, STATIONS AND POINTS.

STATIONING BY PLAN 2
 5. S. 17.10' N. 100.00' E. 0.000
 08 6833, PG. 1278

STATIONING BY PLAN 2
 5. S. 17.10' N. 100.00' E. 0.000
 08 6833, PAGE 1278

STATION EQUATION:
 PC STA. 376+70.90
 @ RR ALIGNMENT
 STA. 600+00.00
 @ RR ALIGNMENT (ALOMA)

STATION EQUATION:
 PC STA. 376+70.90
 @ RR ALIGNMENT
 STA. 600+00.00
 @ RR ALIGNMENT (ALOMA)

STATION EQUATION:
 PC STA. 376+70.90
 @ RR ALIGNMENT
 STA. 600+00.00
 @ RR ALIGNMENT (ALOMA)

STATION EQUATION:
 PC STA. 376+70.90
 @ RR ALIGNMENT
 STA. 600+00.00
 @ RR ALIGNMENT (ALOMA)

STATION EQUATION:
 PC STA. 376+70.90
 @ RR ALIGNMENT
 STA. 600+00.00
 @ RR ALIGNMENT (ALOMA)

STATION EQUATION:
 PC STA. 376+70.90
 @ RR ALIGNMENT
 STA. 600+00.00
 @ RR ALIGNMENT (ALOMA)

SEE VAL MAP(S) V01061 (V3 F10 531A1) V01062 (V3 F10 531B1) AND V02064 (V3 F10 531C-1) FOR GENERAL INFORMATION AND LEGEND RELATIVE TO MILEPOSTS, STATIONS AND POINTS.

STATIONING BY PLAN 2
 5. S. 17.10' N. 100.00' E. 0.000
 08 6833, PAGE 1278

STATIONING BY PLAN 2
 5. S. 17.10' N. 100.00' E. 0.000
 08 6833, PAGE 1278

STATION EQUATION:
 PC STA. 376+70.90
 @ RR ALIGNMENT
 STA. 600+00.00
 @ RR ALIGNMENT (ALOMA)

STATION EQUATION:
 PC STA. 376+70.90
 @ RR ALIGNMENT
 STA. 600+00.00
 @ RR ALIGNMENT (ALOMA)

STATION EQUATION:
 PC STA. 376+70.90
 @ RR ALIGNMENT
 STA. 600+00.00
 @ RR ALIGNMENT (ALOMA)

STATION EQUATION:
 PC STA. 376+70.90
 @ RR ALIGNMENT
 STA. 600+00.00
 @ RR ALIGNMENT (ALOMA)

STATION EQUATION:
 PC STA. 376+70.90
 @ RR ALIGNMENT
 STA. 600+00.00
 @ RR ALIGNMENT (ALOMA)

STATION EQUATION:
 PC STA. 376+70.90
 @ RR ALIGNMENT
 STA. 600+00.00
 @ RR ALIGNMENT (ALOMA)

SEE VAL MAP(S) V01061 (V3 F10 531A1) V01062 (V3 F10 531B1) AND V02064 (V3 F10 531C-1) FOR GENERAL INFORMATION AND LEGEND RELATIVE TO MILEPOSTS, STATIONS AND POINTS.

STATIONING BY PLAN 2
 5. S. 17.10' N. 100.00' E. 0.000
 08 6833, PAGE 1278

STATIONING BY PLAN 2
 5. S. 17.10' N. 100.00' E. 0.000
 08 6833, PAGE 1278

STATION EQUATION:
 PC STA. 376+70.90
 @ RR ALIGNMENT
 STA. 600+00.00
 @ RR ALIGNMENT (ALOMA)

STATION EQUATION:
 PC STA. 376+70.90
 @ RR ALIGNMENT
 STA. 600+00.00
 @ RR ALIGNMENT (ALOMA)

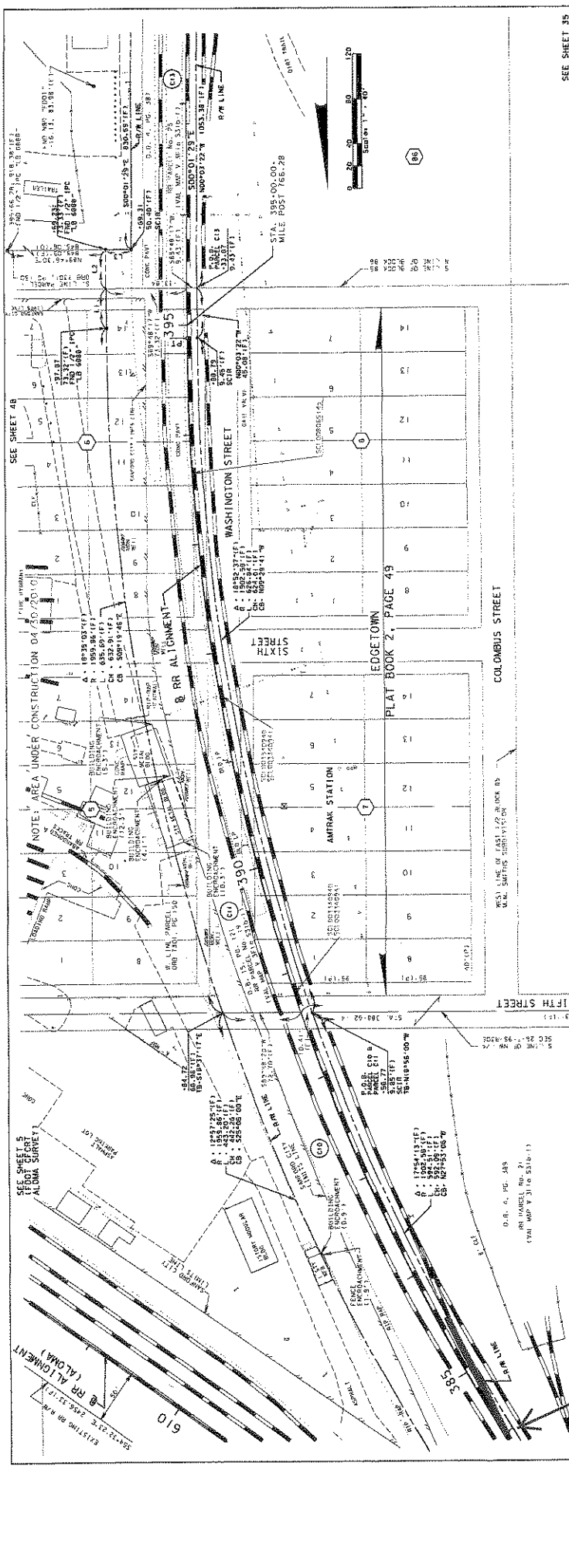
STATION EQUATION:
 PC STA. 376+70.90
 @ RR ALIGNMENT
 STA. 600+00.00
 @ RR ALIGNMENT (ALOMA)

STATION EQUATION:
 PC STA. 376+70.90
 @ RR ALIGNMENT
 STA. 600+00.00
 @ RR ALIGNMENT (ALOMA)

STATION EQUATION:
 PC STA. 376+70.90
 @ RR ALIGNMENT
 STA. 600+00.00
 @ RR ALIGNMENT (ALOMA)

STATION EQUATION:
 PC STA. 376+70.90
 @ RR ALIGNMENT
 STA. 600+00.00
 @ RR ALIGNMENT (ALOMA)

BOUNDARY SURVEY	FLORIDA DEPARTMENT OF TRANSPORTATION		SECTION NO. 77000	
	SURVEYING AND MAPPING		SECTION NO. 19000	
M. M. SMITH'S SUBDIVISION		PLAT BOOK 1, PAGE 55		SEMIWOLE COUNTY
GENERAL AGREEMENTS		GENERAL AGREEMENTS		F. P. ID NO. 412994 2
SEE VAL MAP(S) V01061 (V3 F10 531A1) V01062 (V3 F10 531B1) AND V02064 (V3 F10 531C-1) FOR GENERAL INFORMATION AND LEGEND RELATIVE TO MILEPOSTS, STATIONS AND POINTS.		SEE VAL MAP(S) V01061 (V3 F10 531A1) V01062 (V3 F10 531B1) AND V02064 (V3 F10 531C-1) FOR GENERAL INFORMATION AND LEGEND RELATIVE TO MILEPOSTS, STATIONS AND POINTS.		SHEET 33 OF 56



SEE SHEET 40

SEE SHEET 35

SEE SHEET 33

SEE SHEET 5

SEE SHEET 9

MP 766.07: 110 If & 1 Switch

LINE	BEGINNING	DISTANCE
1	500° 01' 29" E	335.87 (1)
2	80° 09' 32" W	185.38 (1)
3	500° 01' 29" E	335.87 (1)
4	80° 09' 32" W	185.38 (1)

GENERAL AGREEMENTS
(SEE SHEET 53 FOR FURTHER INFORMATION)

AMTRAK TRAINS OPERATED BY THE NATIONAL RAILROAD PASSENGER SERVICE, INC. (NRP) AND AMTRAK TRAINS OPERATED BY THE NATIONAL RAILROAD PASSENGER SERVICE, INC. (NRP) ARE NOT TO BE OPERATED ON THIS TRACK.

AMTRAK TRAINS OPERATED BY THE NATIONAL RAILROAD PASSENGER SERVICE, INC. (NRP) ARE NOT TO BE OPERATED ON THIS TRACK.

AMTRAK TRAINS OPERATED BY THE NATIONAL RAILROAD PASSENGER SERVICE, INC. (NRP) ARE NOT TO BE OPERATED ON THIS TRACK.

GENERAL AGREEMENTS
(SEE SHEET 53 FOR FURTHER INFORMATION)

AMTRAK TRAINS OPERATED BY THE NATIONAL RAILROAD PASSENGER SERVICE, INC. (NRP) ARE NOT TO BE OPERATED ON THIS TRACK.

AMTRAK TRAINS OPERATED BY THE NATIONAL RAILROAD PASSENGER SERVICE, INC. (NRP) ARE NOT TO BE OPERATED ON THIS TRACK.

AMTRAK TRAINS OPERATED BY THE NATIONAL RAILROAD PASSENGER SERVICE, INC. (NRP) ARE NOT TO BE OPERATED ON THIS TRACK.

GENERAL AGREEMENTS
(SEE SHEET 53 FOR FURTHER INFORMATION)

AMTRAK TRAINS OPERATED BY THE NATIONAL RAILROAD PASSENGER SERVICE, INC. (NRP) ARE NOT TO BE OPERATED ON THIS TRACK.

AMTRAK TRAINS OPERATED BY THE NATIONAL RAILROAD PASSENGER SERVICE, INC. (NRP) ARE NOT TO BE OPERATED ON THIS TRACK.

AMTRAK TRAINS OPERATED BY THE NATIONAL RAILROAD PASSENGER SERVICE, INC. (NRP) ARE NOT TO BE OPERATED ON THIS TRACK.

RR ALIGNMENT
PT STA. 386+54.87
Δ • 53402-7(V)
T • 53402-7(V)
L • 1817.37
R • 1910.06
PT STA. 394+88.27

O.R. & P.E. 583
OR. 10/11/08
O&P 10/11/08 (S 10-11)

RR ALIGNMENT
PT STA. 386+54.87
Δ • 53402-7(V)
T • 53402-7(V)
L • 1817.37
R • 1910.06
PT STA. 394+88.27

RR ALIGNMENT
PT STA. 386+54.87
Δ • 53402-7(V)
T • 53402-7(V)
L • 1817.37
R • 1910.06
PT STA. 394+88.27

RR ALIGNMENT
PT STA. 386+54.87
Δ • 53402-7(V)
T • 53402-7(V)
L • 1817.37
R • 1910.06
PT STA. 394+88.27

RR ALIGNMENT
PT STA. 386+54.87
Δ • 53402-7(V)
T • 53402-7(V)
L • 1817.37
R • 1910.06
PT STA. 394+88.27

RR ALIGNMENT
PT STA. 386+54.87
Δ • 53402-7(V)
T • 53402-7(V)
L • 1817.37
R • 1910.06
PT STA. 394+88.27

RR ALIGNMENT
PT STA. 386+54.87
Δ • 53402-7(V)
T • 53402-7(V)
L • 1817.37
R • 1910.06
PT STA. 394+88.27

RR ALIGNMENT
PT STA. 386+54.87
Δ • 53402-7(V)
T • 53402-7(V)
L • 1817.37
R • 1910.06
PT STA. 394+88.27

FLORIDA DEPARTMENT OF TRANSPORTATION
SURVEYING AND MAPPING

SECTION 26, TOWNSHIP 19 SOUTH, RANGE 30 EAST

M.M. SMITH'S SUBDIVISION
PLAT BOOK 1, PAGE 55

CENTRAL FLORIDA COMMERCE BANK
SECTION 26, TOWNSHIP 19 SOUTH, RANGE 30 EAST

SEMIHOLE COUNTY

F.P. ID NO. 412954 2

SHEET 34 OF 56

SEE SHEET 33

SEE SHEET 35

SEE SHEET 40

SEE SHEET 9

SEE SHEET 5

SEE SHEET 10

SEE SHEET 11

SEE SHEET 12

SEE SHEET 13

SEE SHEET 14

SEE SHEET 15

SEE SHEET 16

SEE SHEET 17

SEE SHEET 18

SEE SHEET 19

SEE SHEET 20

SEE SHEET 21

SEE SHEET 22

SEE SHEET 23

SEE SHEET 24

SEE SHEET 25

SEE SHEET 26

SEE SHEET 27

SEE SHEET 28

SEE SHEET 29

SEE SHEET 30

SEE SHEET 31

SEE SHEET 32

SEE SHEET 33

SEE SHEET 34

SEE SHEET 35

SEE SHEET 36

SEE SHEET 37

SEE SHEET 38

SEE SHEET 39

SEE SHEET 40

SEE SHEET 41

SEE SHEET 42

SEE SHEET 43

SEE SHEET 44

SEE SHEET 45

SEE SHEET 46

SEE SHEET 47

SEE SHEET 48

SEE SHEET 49

SEE SHEET 50

SEE SHEET 51

SEE SHEET 52

SEE SHEET 53

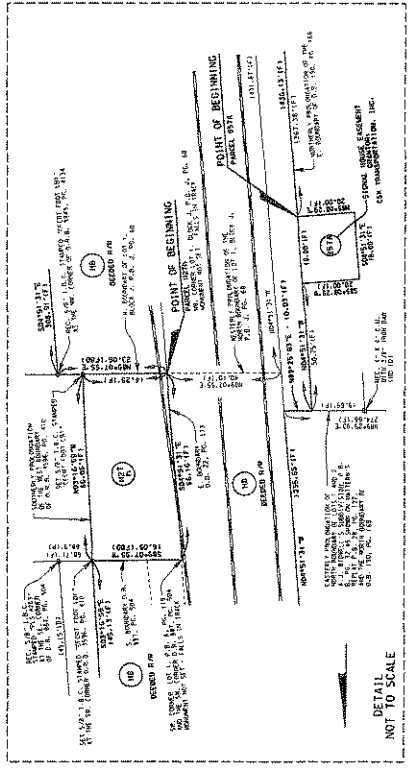
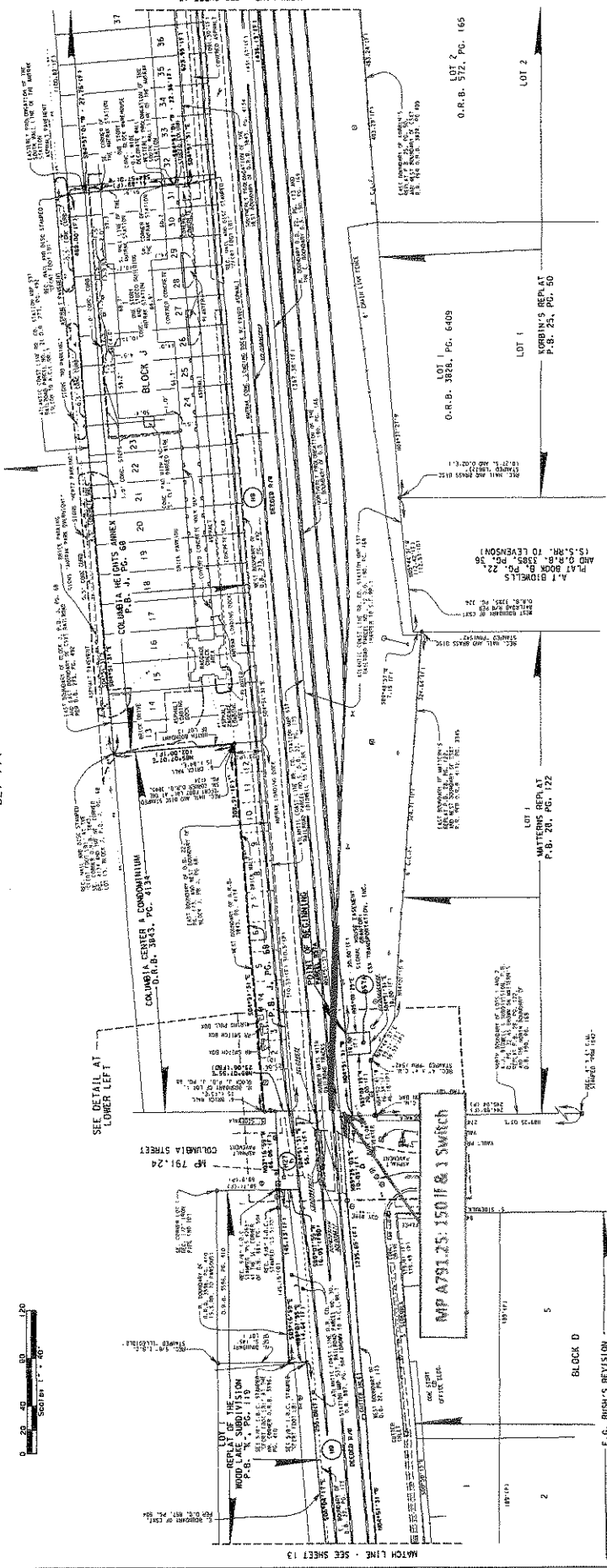
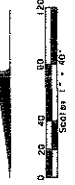
SEE SHEET 54

SEE SHEET 55

SEE SHEET 56

SECTION 35, TOWNSHIP 22 SOUTH, RANGE 29 EAST

SE, 1/4



BOUNDARY SURVEY				FLORIDA DEPARTMENT OF TRANSPORTATION SURVEYING AND MAPPING				SECTION 75000			
REVISION	BY	DATE	REVISION	BY	DATE	REVISION	BY	DATE	REVISION	BY	DATE

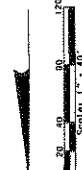
Applicant No.	Owner	Survey No.	Date	Scale	Status

Item	Description	Reference
1		
2		
3		
4		
5		
6		
7		
8		
9		
10		
11		
12		
13		
14		
15		
16		
17		
18		
19		
20		
21		
22		
23		
24		
25		
26		
27		
28		
29		
30		
31		
32		
33		
34		
35		
36		
37		

Drawn by	Checked by	Date	Scale

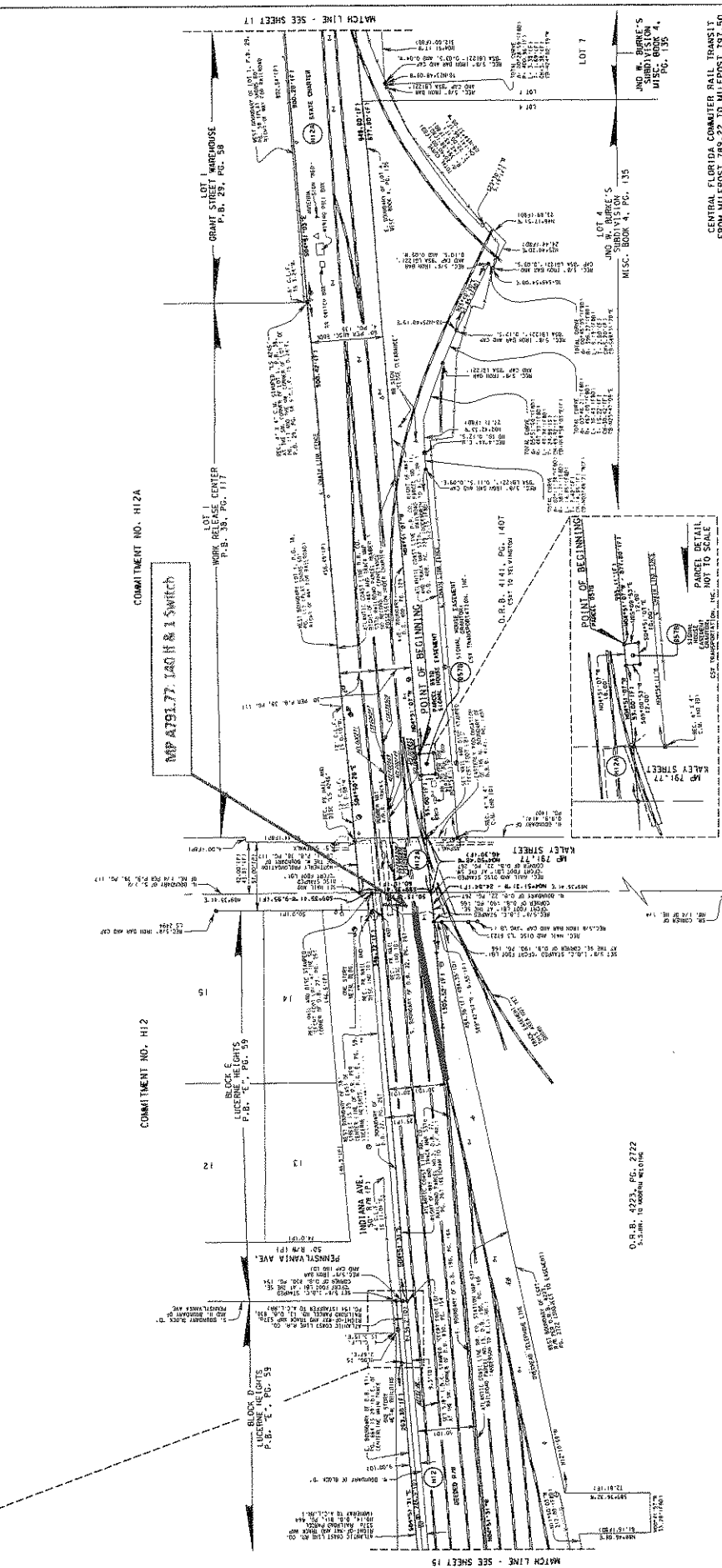
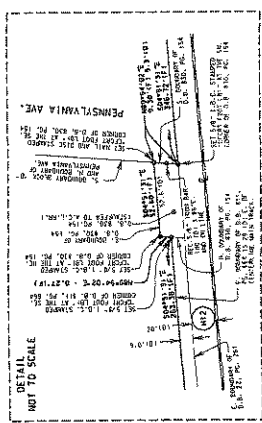
Project Name	Section	Scale	Sheet No.
CENTRAL FLORIDA COMMERCE RAIL TRANSPORTATION	SECTION 75000	SCALE: 1" = 40'	SHEET 14 OF 45

FLA 9-288974-00N
 11.5
 MATCH LINE - SEE SHEET 13
 MATCH LINE - SEE SHEET 15
 O.R.B. 3884, PG. 6409
 O.R.B. 5172, PG. 165
 O.R.B. 787, PG. 46
 A.T. BLOMVELL'S PLAT BOOK NO. 22, PG. 22
 WATTERS REPEAT P.B. 20, PG. 122
 KORBIN'S REPEAT P.B. 25, PG. 50
 COMMITMENT NO. H8
 F.C. RUSH'S REVISION P.B. 7, PG. 11
 BLOCK D
 BLOCK J
 BLOCK K
 BLOCK L
 BLOCK M
 BLOCK N
 BLOCK O
 BLOCK P
 BLOCK Q
 BLOCK R
 BLOCK S
 BLOCK T
 BLOCK U
 BLOCK V
 BLOCK W
 BLOCK X
 BLOCK Y
 BLOCK Z
 SECTION 75000
 GRANDE COUNTY
 F.P. ID 412894.2
 SHEET 14 OF 45
 CENTRAL FLORIDA COMMERCE RAIL TRANSPORTATION
 FROM MILEPOST 789.22 TO MILEPOST 797.50
 SECTION 75000
 GRANDE COUNTY
 F.P. ID 412894.2
 SHEET 14 OF 45
 FLORIDA DEPARTMENT OF TRANSPORTATION
 SURVEYING AND MAPPING
 SECTION 75000
 GRANDE COUNTY
 F.P. ID 412894.2
 SHEET 14 OF 45
 CENTRAL FLORIDA COMMERCE RAIL TRANSPORTATION
 FROM MILEPOST 789.22 TO MILEPOST 797.50
 SECTION 75000
 GRANDE COUNTY
 F.P. ID 412894.2
 SHEET 14 OF 45



Block No.	Owner	Acres	Volume	Page	Reference
1
2
3
4
5
6
7
8
9
10
11
12
13
14
15

NE. 1/4
SECTION 2, TOWNSHIP 23 SOUTH, RANGE 29 EAST



NO.	DATE	REVISION	BY	DATE	REVISION	BY	DATE	REVISION	BY
1
2

SECTION 175000

ORANGE COUNTY

FLORIDA DEPARTMENT OF TRANSPORTATION
BOUNDARY SURVEY

CENTRAL FLORIDA COASTER RAIL TRANSIT
SEGMENT "H" - MAINLINE BOUNDARY SURVEY

FROM MILEPOST 789-22 TO MILEPOST 797-50

SCALE: 1" = 40'

F.P. ID 412984 2

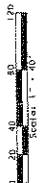
SHEET 18 OF 45

MATCH LINE - SEE SHEET 20

COMMITMENT NO. H10
S. J. ANDERSON'S SUBDIVISION
P.B. NO. 87

POINT OF BEGINNING
S. J. ANDERSON'S SUBDIVISION
P.B. NO. 87

POINT OF COMMENCEMENT
S. J. ANDERSON'S SUBDIVISION
P.B. NO. 87



COMMITMENT NO. H11

POINT OF BEGINNING
S. J. ANDERSON'S SUBDIVISION
P.B. NO. 87

COMMITMENT NO. H10

MATCH LINE - SEE SHEET 20

LOT 1
LOT 2
LOT 5

POINT OF BEGINNING
S. J. ANDERSON'S SUBDIVISION
P.B. NO. 87

COMMITMENT NO. H10

MATCH LINE - SEE SHEET 20

MP A792.54; 160 ft & 1 Switch

J. D. BURK'S
ADDITION TO 10th AVENUE
MISC. BOOK 4, PG. 135

SE. 1/4

SECTION 2, TOWNSHIP 23 SOUTH, RANGE 29 EAST

NE. 1/4

SECTION 11, TOWNSHIP 23 SOUTH, RANGE 29 EAST

Table with multiple columns containing survey data and notes.

FLORIDA DEPARTMENT OF TRANSPORTATION
SURVEYING AND MAPPING

BOUNDARY SURVEY

SECTION 158000
ORANGE COUNTY
F.P. ID 412994 2
SHEET 19 OF 45

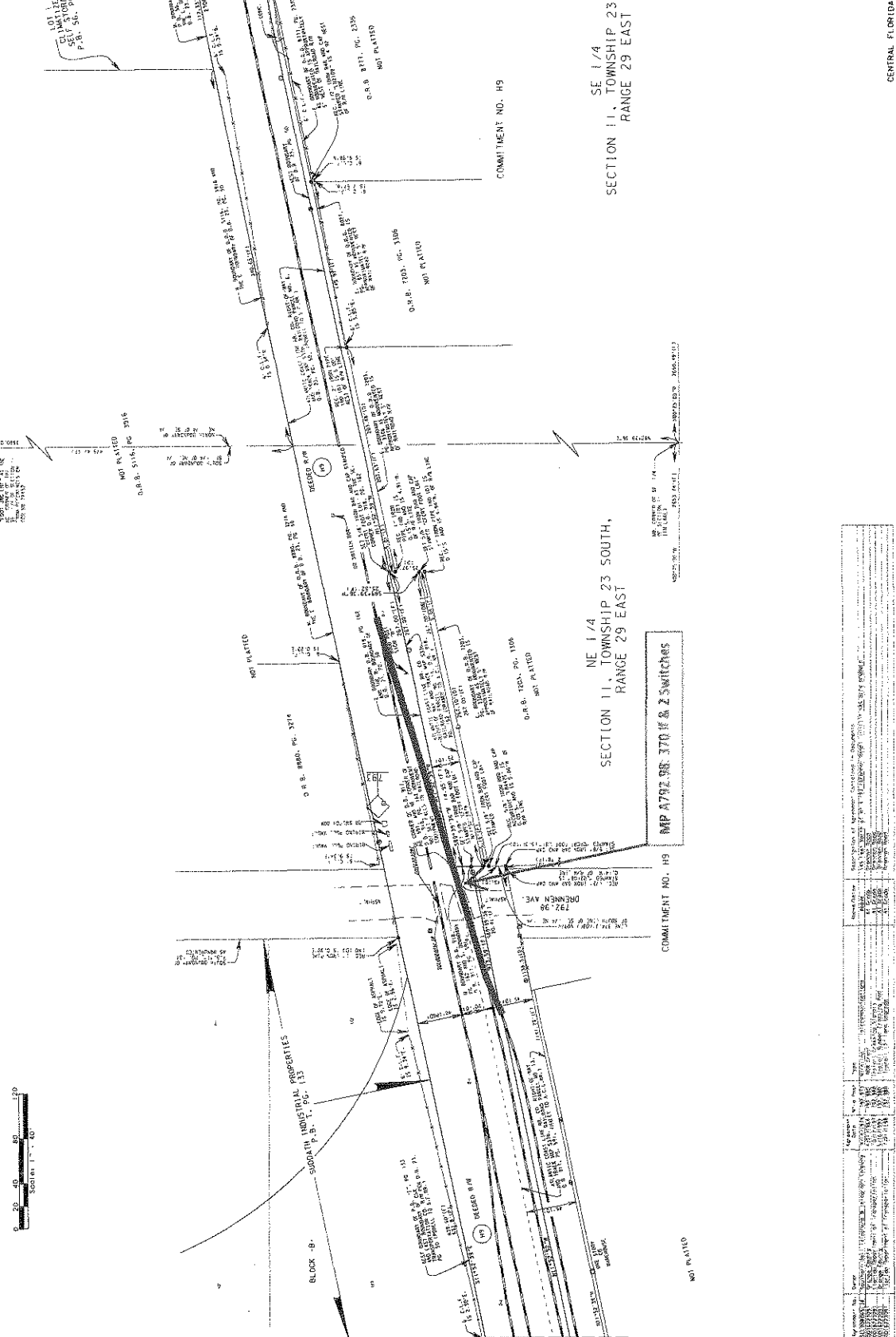
CENTRAL FLORIDA COMMER RAIL TRANSIT
FROM MILEPOST 789.22 TO MILEPOST 797.50

CENTRAL FLORIDA COMMER RAIL TRANSIT
SEGMENT 7411 MAILLINE BOUNDARY SURVEY

SHEET NO. 1



SE 1/4
SECTION 11, TOWNSHIP 23 SOUTH,
RANGE 29 EAST



COMMITMENT NO. H9

SECTION 11, TOWNSHIP 23 SOUTH,
RANGE 29 EAST

SE 1/4
SECTION 11, TOWNSHIP 23 SOUTH,
RANGE 29 EAST

MP 792.98: 370 H & Z SWITCHES

COMMITMENT NO. H9

NOT PLATTED

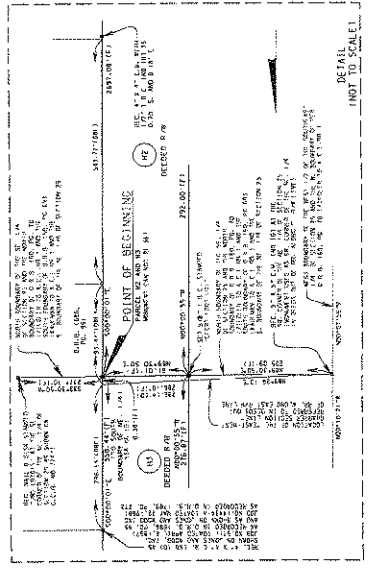
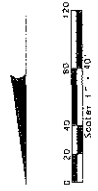
CENTRAL FLORIDA COUNTY RAIL TRANSIT
PROJECT FOST 19312Z AND INTEREST 1931-30

CENTRAL FLORIDA COUNTY RAIL TRANSIT
SECTION 11, TOWNSHIP 23 SOUTH,
RANGE 29 EAST

SHEET 21 OF 45

FLORIDA DEPARTMENT OF TRANSPORTATION
SURVEYING AND MAPPING

BOUNDARY SURVEY

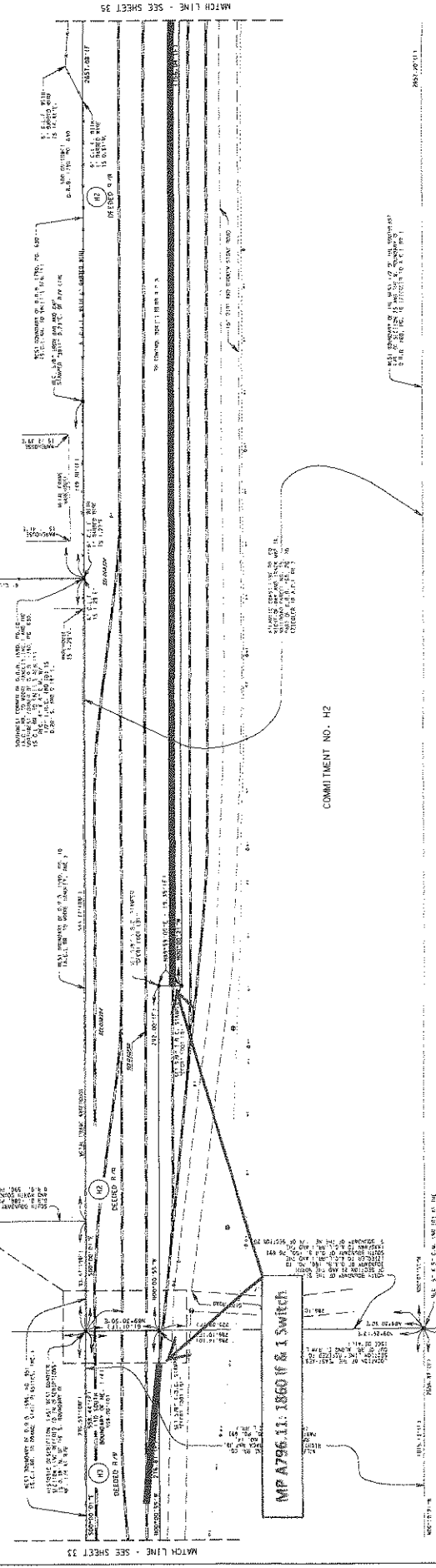


NE. 1/4

SECTION 25, TOWNSHIP 23 SOUTH, RANGE 29 EAST

NW. 1/4

SECTION 25, TOWNSHIP 23 SOUTH, RANGE 29 EAST



SW. 1/4

SECTION 25, TOWNSHIP 23 SOUTH, RANGE 29 EAST

NW. 1/4

NO.	DATE	DESCRIPTION	BY	CHKD.
1	10/15/11	FIELD SURVEY	J. W. WILSON	J. W. WILSON
2	10/15/11	FIELD SURVEY	J. W. WILSON	J. W. WILSON
3	10/15/11	FIELD SURVEY	J. W. WILSON	J. W. WILSON
4	10/15/11	FIELD SURVEY	J. W. WILSON	J. W. WILSON
5	10/15/11	FIELD SURVEY	J. W. WILSON	J. W. WILSON
6	10/15/11	FIELD SURVEY	J. W. WILSON	J. W. WILSON
7	10/15/11	FIELD SURVEY	J. W. WILSON	J. W. WILSON
8	10/15/11	FIELD SURVEY	J. W. WILSON	J. W. WILSON
9	10/15/11	FIELD SURVEY	J. W. WILSON	J. W. WILSON
10	10/15/11	FIELD SURVEY	J. W. WILSON	J. W. WILSON

MATCH LINE - SEE SHEET 33

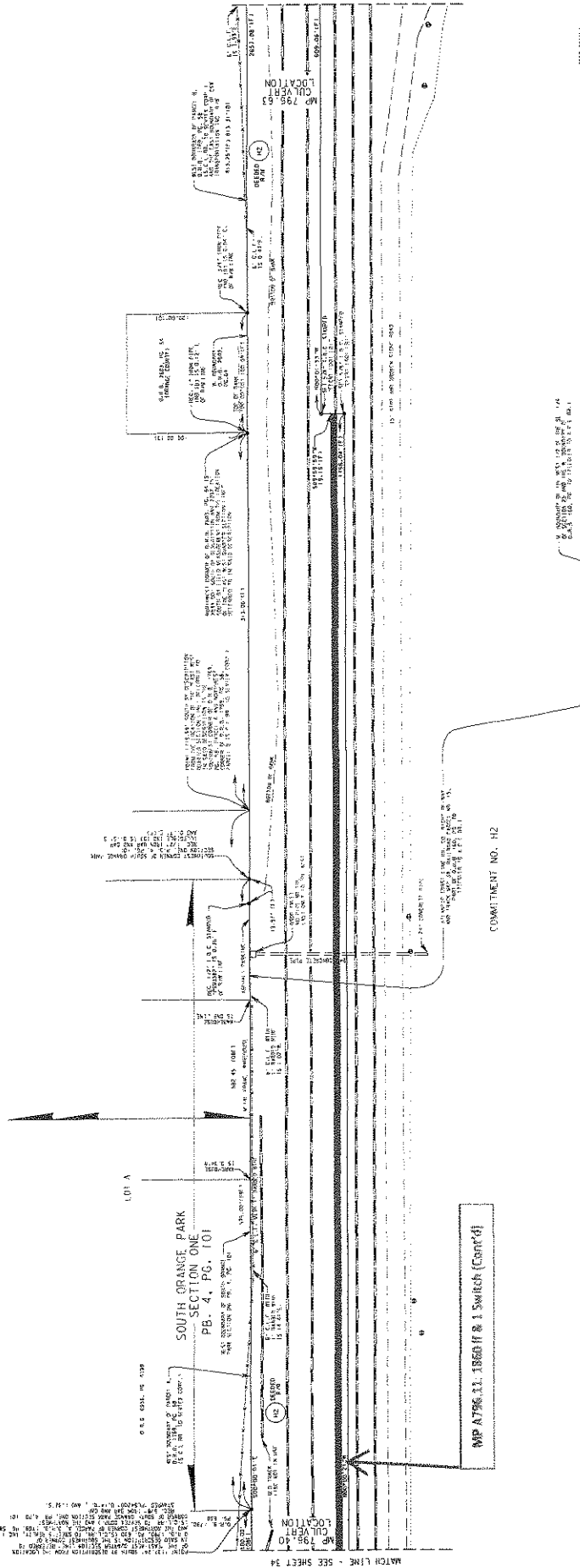
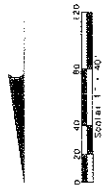
MATCH LINE - SEE SHEET 35

FLORIDA DEPARTMENT OF TRANSPORTATION
SURVEYING AND MAPPING

BOUNDARY SURVEY
SECTION 25, TOWNSHIP 23 SOUTH, RANGE 29 EAST
COMMITMENT NO. H2
COMMITMENT NO. H3
MP A796 11: X860 f & X Switch
CENTRAL FLORIDA COMPUTER RAIL TRANSIT
FROM WILFPOST 781.22 TO WILFPOST 781.50
JAMES W. WILSON, INC.
1000 W. WILSON BLVD.
ORLANDO, FL 32817
F.P. ID 412994 2
ORANGE COUNTY
SHEET 34 OF 45

SECTION 25, TOWNSHIP 23 SOUTH, RANGE 29 EAST

SE. 1/4



SECTION 25, TOWNSHIP 23 SOUTH, RANGE 29 EAST

SW. 1/4

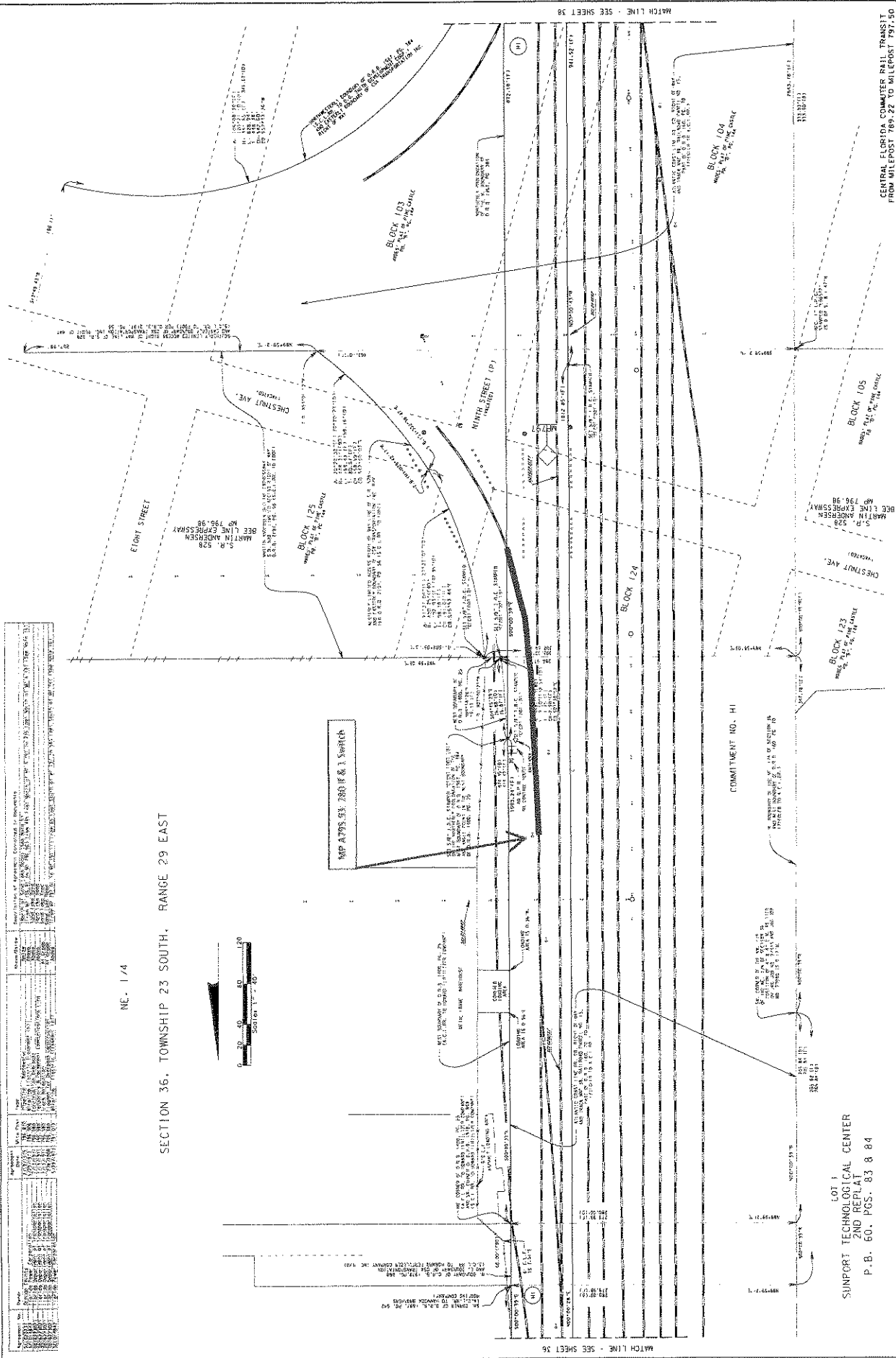
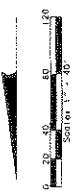
1:50 0 20 40 60 80 100 120
SCALE 1" = 40'

BOUNDARY SURVEY	FLORIDA DEPARTMENT OF TRANSPORTATION		SURVEYING AND MAPPING		SECTION 75000		ORANGE COUNTY		
CENTRAL FLORIDA COMMUTER RAIL TRANSPORTATION					CENTRAL FLORIDA COMMUTER RAIL TRANSPORTATION				
FROM WILFPOST 18322 TO WILFPOST 19130					SECTION 25, TOWNSHIP 23 SOUTH, RANGE 29 EAST				
DESIGNED BY: J. W. WATSON, INC.					DESIGNED BY: J. W. WATSON, INC.				
DRAWN BY: J. W. WATSON, INC.					DRAWN BY: J. W. WATSON, INC.				
CHECKED BY: J. W. WATSON, INC.					CHECKED BY: J. W. WATSON, INC.				
DATE: 10/15/03					DATE: 10/15/03				
SCALE: 1" = 40'					SCALE: 1" = 40'				
SHEET 35 OF 45					SHEET 35 OF 45				

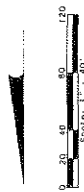
<p>MP 4795.83 280 R & 1 Switch</p>
--

NE. 1/4

SECTION 36, TOWNSHIP 23 SOUTH, RANGE 29 EAST

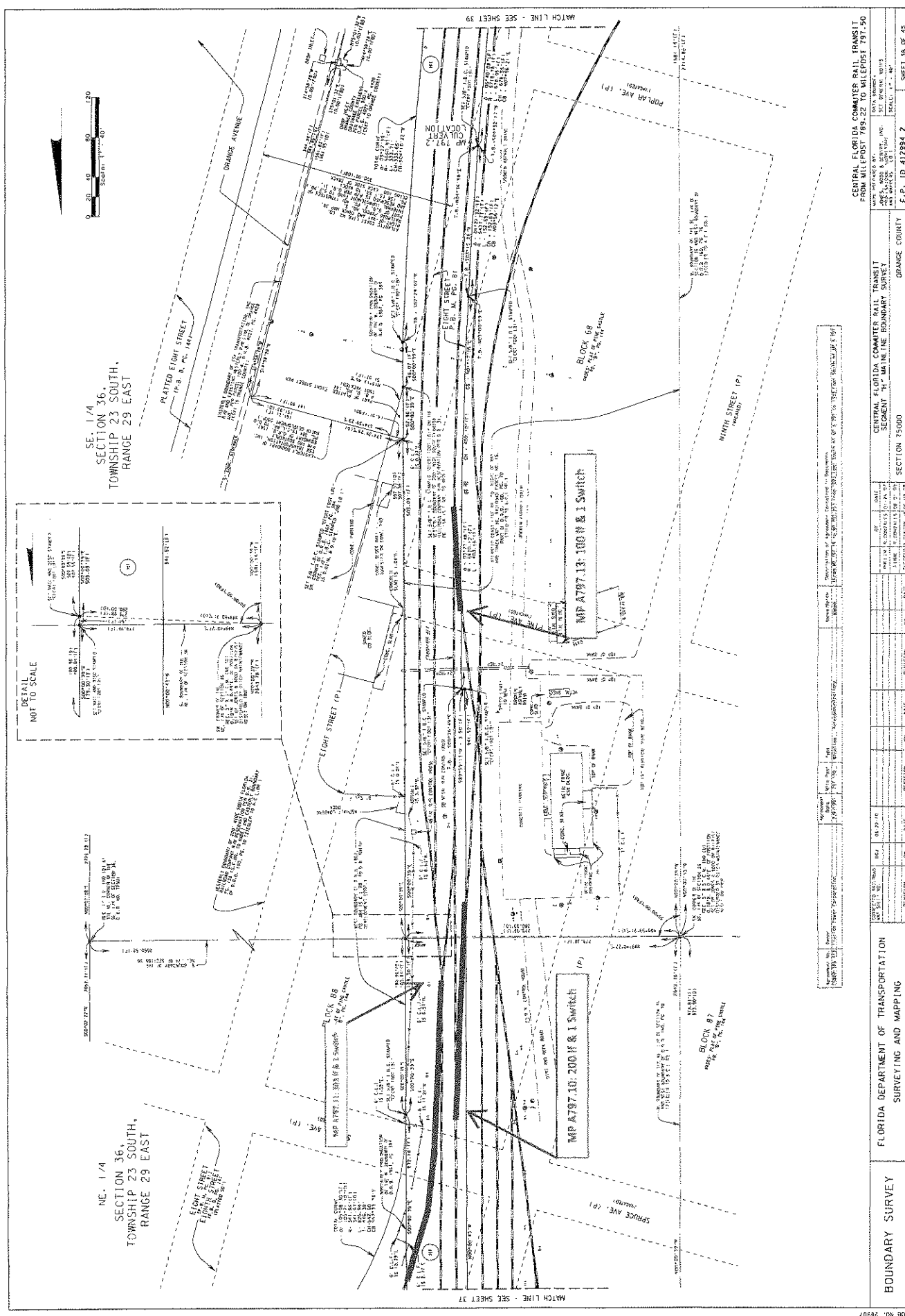
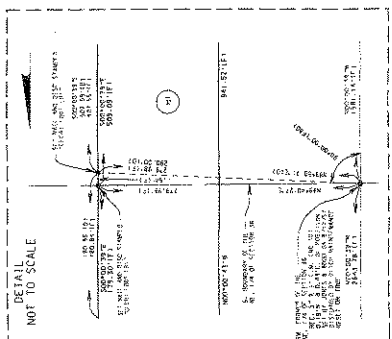


<p>BOUNDARY SURVEY</p>		<p>FLORIDA DEPARTMENT OF TRANSPORTATION SURVEYING AND MAPPING</p>	
<p>LOT 1 SUNPORT TECHNOLOGICAL CENTER 2ND REPLAT P.B. 60, PGS. 83 & 84</p>		<p>SECTION 15660</p>	
<p>CENTRAL FLORIDA COMRADE RAIL TRANSIT SEGMENT 31 MAINE LINE BOUNDARY SURVEY</p>		<p>ORANGE COUNTY</p>	
<p>FROM MILEPOST 789.22 TO MILEPOST 797.50</p>		<p>SECTION 15660</p>	
<p>DATE: 11/11/03</p>		<p>DATE: 11/11/03</p>	
<p>BY: [Signature]</p>		<p>BY: [Signature]</p>	
<p>DATE: 11/11/03</p>		<p>DATE: 11/11/03</p>	
<p>SCALE: 1" = 40'</p>		<p>SCALE: 1" = 40'</p>	
<p>PROJECT NO. 412894-2</p>		<p>PROJECT NO. 412894-2</p>	
<p>SHEET 37 OF 45</p>		<p>SHEET 37 OF 45</p>	



SE. 1/4
SECTION 36,
TOWNSHIP 23 SOUTH,
RANGE 29 EAST

NE. 1/4
SECTION 36,
TOWNSHIP 23 SOUTH,
RANGE 29 EAST



APPROVED FOR THE BOARD OF COUNTY COMMISSIONERS OF GRANGE COUNTY, FLORIDA, BY THE ENGINEER:

DATE: 11/11/11

PROJECT: BOUNDARY SURVEY FOR THE CENTRAL FLORIDA COMMUTER RAIL PROJECT

NO.	DATE	DESCRIPTION	BY	DATE	BY
1	11/11/11	BOUNDARY SURVEY FOR THE CENTRAL FLORIDA COMMUTER RAIL PROJECT	J. W. BROWN	11/11/11	J. W. BROWN
2	11/11/11	REVISION	J. W. BROWN	11/11/11	J. W. BROWN
3	11/11/11	REVISION	J. W. BROWN	11/11/11	J. W. BROWN
4	11/11/11	REVISION	J. W. BROWN	11/11/11	J. W. BROWN
5	11/11/11	REVISION	J. W. BROWN	11/11/11	J. W. BROWN

FLORIDA DEPARTMENT OF TRANSPORTATION
SURVEYING AND MAPPING

BOUNDARY SURVEY

SECTION 36, TOWNSHIP 23 SOUTH, RANGE 29 EAST

GRANGE COUNTY

F. P. ID 412994.2

SHEET 38 OF 45

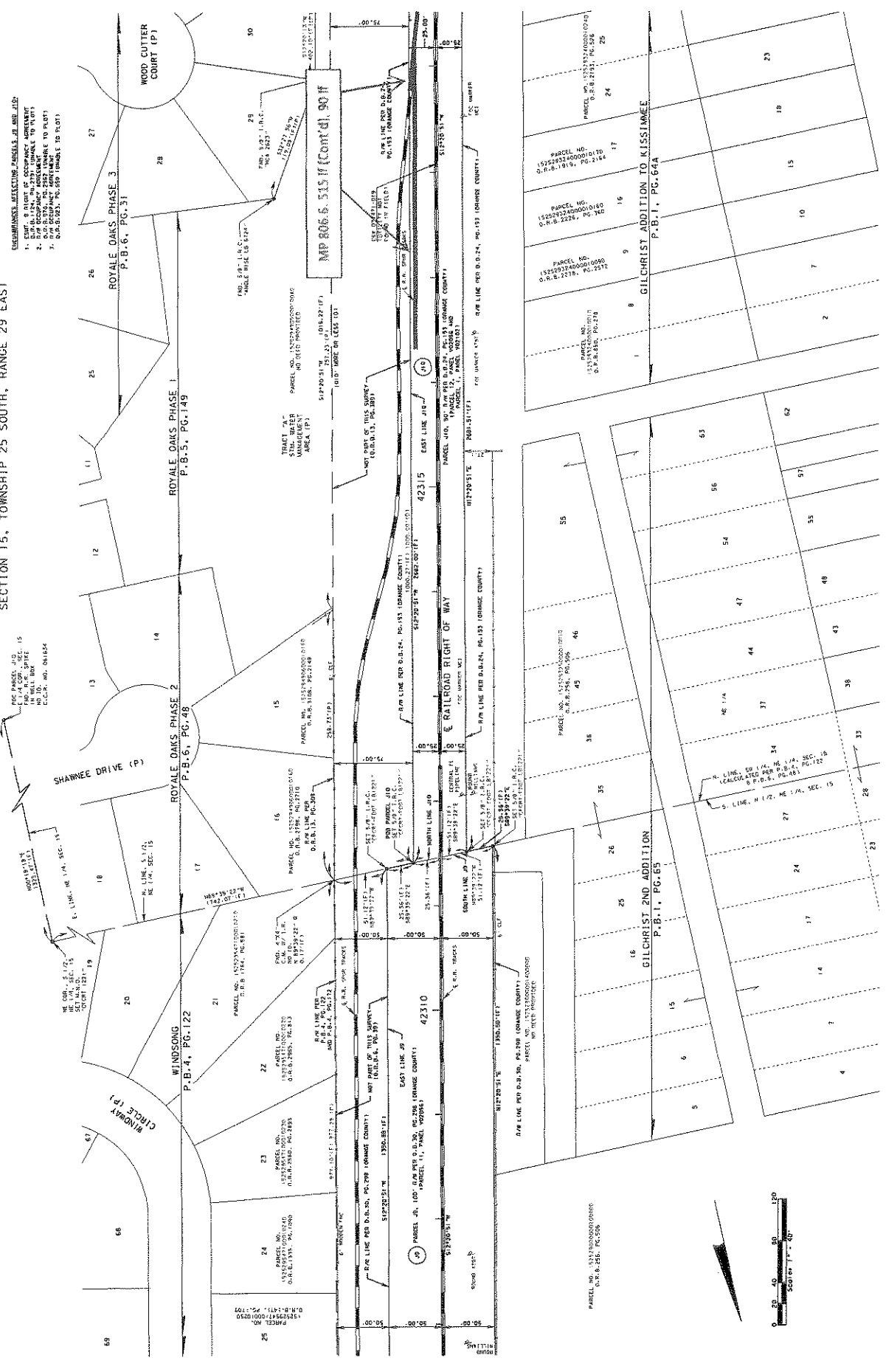
CENTRAL FLORIDA COMMUTER RAIL PROJECT
 PROJECT NO. 11-1000-0001
 SHEET NO. 38 OF 45

DATE: 11/11/11

SCALE: 1" = 40'

SECTION 15, TOWNSHIP 25 SOUTH, RANGE 29 EAST

- UNRECORDED LECTURE PARCELS OF AND TO:**
1. PARCELS 6, 7, 8, 9, 10, 11, 12, 13, 14, 15, 16, 17, 18, 19, 20, 21, 22, 23, 24, 25, 26, 27, 28, 29, 30, 31, 32, 33, 34, 35, 36, 37, 38, 39, 40, 41, 42, 43, 44, 45, 46, 47, 48, 49, 50, 51, 52, 53, 54, 55, 56, 57, 58, 59, 60, 61, 62, 63, 64, 65, 66, 67, 68, 69, 70, 71, 72, 73, 74, 75, 76, 77, 78, 79, 80, 81, 82, 83, 84, 85, 86, 87, 88, 89, 90, 91, 92, 93, 94, 95, 96, 97, 98, 99, 100.
 2. PARCELS 1, 2, 3, 4, 5, 6, 7, 8, 9, 10, 11, 12, 13, 14, 15, 16, 17, 18, 19, 20, 21, 22, 23, 24, 25, 26, 27, 28, 29, 30, 31, 32, 33, 34, 35, 36, 37, 38, 39, 40, 41, 42, 43, 44, 45, 46, 47, 48, 49, 50, 51, 52, 53, 54, 55, 56, 57, 58, 59, 60, 61, 62, 63, 64, 65, 66, 67, 68, 69, 70, 71, 72, 73, 74, 75, 76, 77, 78, 79, 80, 81, 82, 83, 84, 85, 86, 87, 88, 89, 90, 91, 92, 93, 94, 95, 96, 97, 98, 99, 100.
 3. PARCELS 1, 2, 3, 4, 5, 6, 7, 8, 9, 10, 11, 12, 13, 14, 15, 16, 17, 18, 19, 20, 21, 22, 23, 24, 25, 26, 27, 28, 29, 30, 31, 32, 33, 34, 35, 36, 37, 38, 39, 40, 41, 42, 43, 44, 45, 46, 47, 48, 49, 50, 51, 52, 53, 54, 55, 56, 57, 58, 59, 60, 61, 62, 63, 64, 65, 66, 67, 68, 69, 70, 71, 72, 73, 74, 75, 76, 77, 78, 79, 80, 81, 82, 83, 84, 85, 86, 87, 88, 89, 90, 91, 92, 93, 94, 95, 96, 97, 98, 99, 100.



FLORIDA DEPARTMENT OF TRANSPORTATION
SURVEYING AND MAPPING

BOUNDARY SURVEY

CENTRAL FLORIDA COASTAL RAIL TRANSIT
SEGMENT "J" MAIN LINE BOUNDARY SURVEY

REVISED	DATE	REVISION	BY	DATE	REVISION	BY	DATE	REVISION	BY

SECTION NOS. 15000 AND 20000 DANCE AND DEERLA COUNTIES
P.L.P. ID. 412384-2
SCALE: 1" = 40'

CURT FROM MILE POST 802.74 TO MILE POST 814.97

