



REVISIONS		
DATE	BY	DESCRIPTION

VHB Vanasse Hangen Brustlin, Inc.
 Engineers, Planners & Scientists
 135 W. Central Blvd., Suite 800
 Orlando, FL 32801 (407)839-4006

EarthTech
 A Tyco International Ltd. Company
 CERTIFICATE OF AUTHORIZATION NO 8115
 30 SOUTH KELLER ROAD, SUITE 500
 ORLANDO, FL 32810

STATE OF FLORIDA DEPARTMENT OF TRANSPORTATION		
ROAD NO.	COUNTY	FINANCIAL PROJECT ID
	DELAND VOLUSIA	412994-1-22-01

CENTRAL FLORIDA COMMUTER RAIL TRANSIT
**DELAND STATION
 CONCEPT PLAN**

SHEET NO.



REVISIONS	
DATE	DESCRIPTION

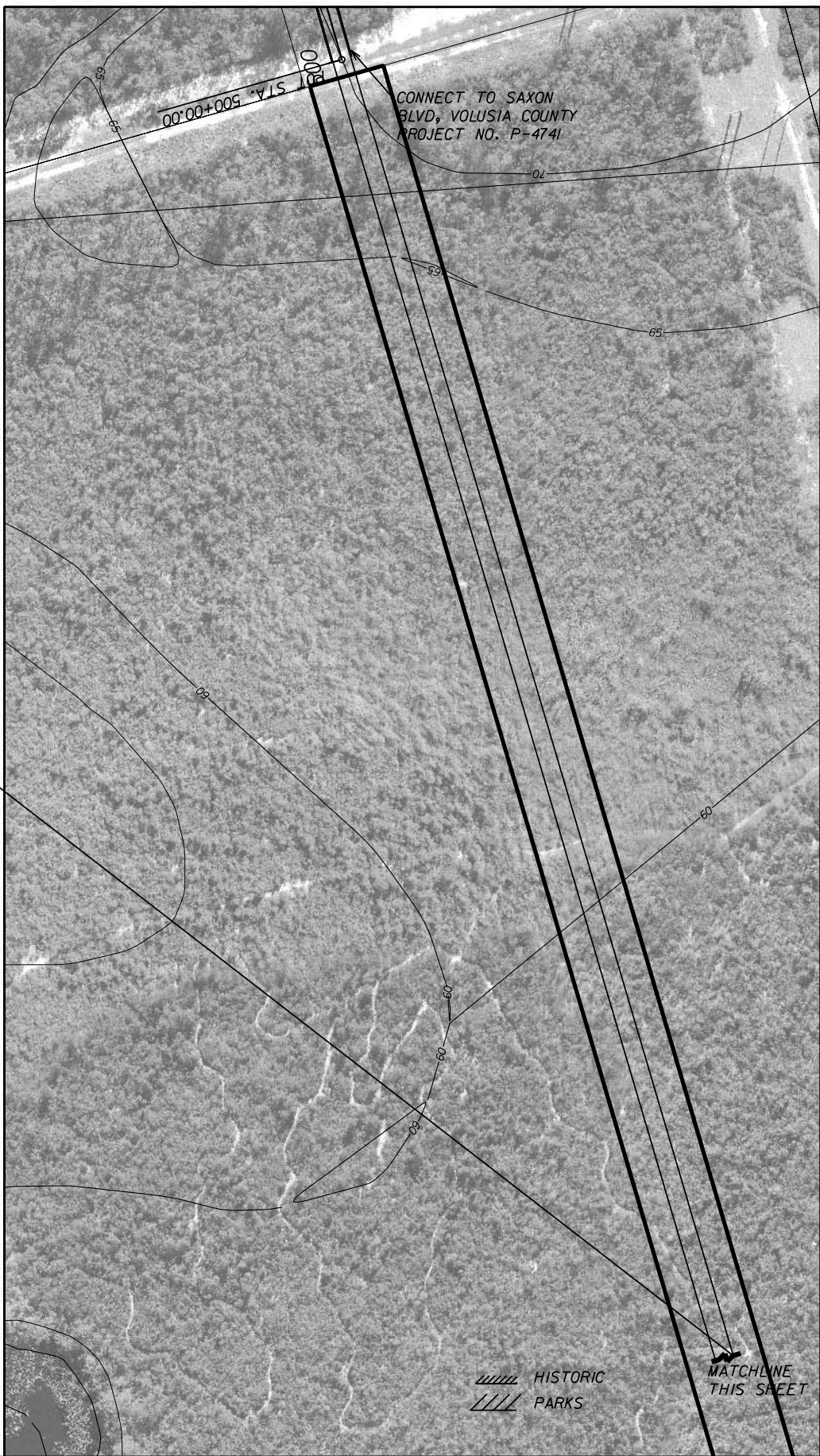
VHB Vanasse Hangen Brustlin, Inc.
 Engineers, Planners & Scientists
 135 W. Central Blvd., Suite 800
 Orlando, FL 32801 (407)839-4006

EarthTech
 A Tyco International Ltd. Company
 CERTIFICATE OF AUTHORIZATION NO 8115
 30 SOUTH KELLER ROAD, SUITE 500
 ORLANDO, FL 32810

STATE OF FLORIDA DEPARTMENT OF TRANSPORTATION		
ROAD NO.	COUNTY	FINANCIAL PROJECT ID
	DELAND VOLUSIA	412994-1-22-01

CENTRAL FLORIDA COMMUTER RAIL TRANSIT
DELAND STATION
CONCEPT PLAN

SHEET NO.



REVISIONS		
DATE	BY	DESCRIPTION

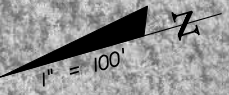
VHB Vanasse Hangen Brustlin, Inc.
 Engineers, Planners & Scientists
 135 W. Central Blvd., Suite 800
 Orlando, FL 32801 (407)839-4006

EarthTech
 A Tyco International Ltd. Company
 CERTIFICATE OF AUTHORIZATION NO 8115
 30 SOUTH KELLER ROAD, SUITE 500
 ORLANDO, FL 32810

STATE OF FLORIDA DEPARTMENT OF TRANSPORTATION		
ROAD NO.	COUNTY	FINANCIAL PROJECT ID
	UNINCORPORATED VOLUSIA	412994-1-22-01

CENTRAL FLORIDA COMMUTER RAIL TRANSIT
**SAXON STATION
 CONCEPT PLAN**

SHEET NO.



REVISIONS		
DATE	BY	DESCRIPTION

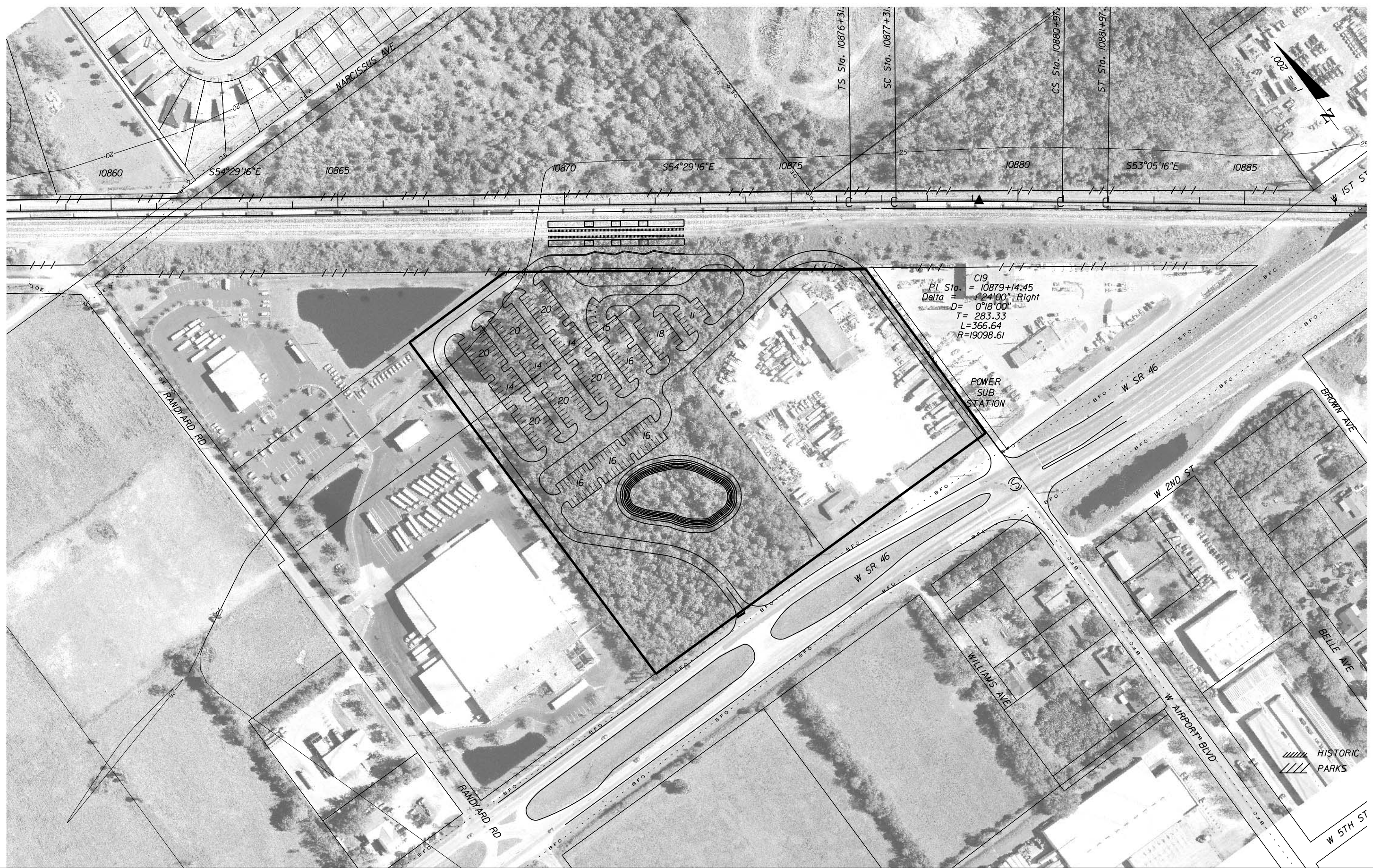
VHB Vanasse Hangen Brustlin, Inc.
 Engineers, Planners & Scientists
 135 W. Central Blvd., Suite 800
 Orlando, FL 32801 (407)839-4006

EarthTech
 A Tyco International Ltd. Company
 CERTIFICATE OF AUTHORIZATION NO 8115
 30 SOUTH KELLER ROAD, SUITE 500
 ORLANDO, FL 32810

STATE OF FLORIDA DEPARTMENT OF TRANSPORTATION		
ROAD NO.	COUNTY	FINANCIAL PROJECT ID
	UNINCORPORATED VOLUSIA	412994-1-22-01

CENTRAL FLORIDA COMMUTER RAIL TRANSIT
**SAXON STATION
 CONCEPT PLAN**

SHEET NO.



C19
 PI Sta. = 10879+14.45
 Delta = 1°24'00" Right
 D = 0°18'00"
 T = 283.33
 L = 366.64
 R = 19098.61

HISTORIC
 PARKS

REVISIONS		
DATE	BY	DESCRIPTION

VHB
 Vanasse Hangen Brustlin, Inc.
 Engineers, Planners & Scientists
 135 W. Central Blvd., Suite 800
 Orlando, FL 32801 (407)839-4006

EarthTech
 A Tyco International Ltd. Company
 CERTIFICATE OF AUTHORIZATION NO 8115
 30 SOUTH KELLER ROAD, SUITE 500
 ORLANDO, FL 32810

STATE OF FLORIDA DEPARTMENT OF TRANSPORTATION		
ROAD NO.	COUNTY	FINANCIAL PROJECT ID
	UNINCORPORATED SEMNOLE	412994-1-22-01

CENTRAL FLORIDA COMMUTER RAIL TRANSIT
SANFORD STATION
CONCEPT PLAN

SHEET
 NO.



-C19
 PI Sta. = 10879+14.4
 Delta = 1°24'00" R
 D = 0°18'00"
 T = 283.33
 L = 366.64
 R = 19098.61

POWER
SUB
STATION

SR 46

REVISIONS		
DATE	BY	DESCRIPTION

VHB
 Vanasse Hangen Brustlin, Inc.
 Engineers, Planners & Scientists
 135 W. Central Blvd., Suite 800
 Orlando, FL 32801 (407)839-4006

EarthTech
 A Tyco International Ltd. Company
 CERTIFICATE OF AUTHORIZATION NO 8115
 30 SOUTH KELLER ROAD, SUITE 500
 ORLANDO, FL 32810

STATE OF FLORIDA DEPARTMENT OF TRANSPORTATION		
ROAD NO.	COUNTY	FINANCIAL PROJECT ID
	UNINCORPORATED SEMHOLE	412994-1-22-01

CENTRAL FLORIDA COMMUTER RAIL TRANSIT
SANFORD STATION
CONCEPT PLAN

SHEET
NO.



REVISIONS		
DATE	BY	DESCRIPTION

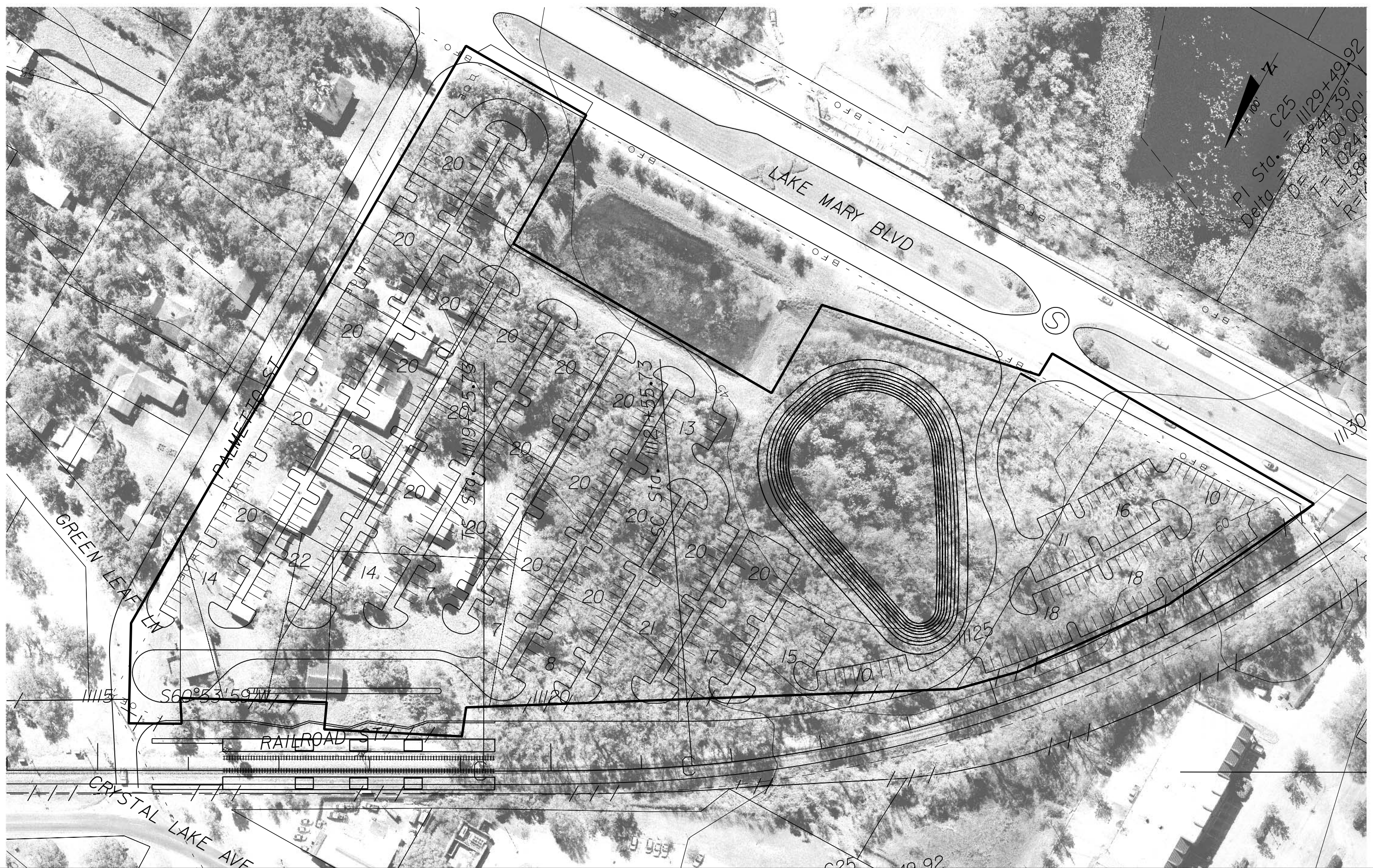
VHB Vanasse Hangen Brustlin, Inc.
 Engineers, Planners & Scientists
 135 W. Central Blvd., Suite 800
 Orlando, FL 32801 (407)839-4006

EarthTech
 A Tyco International Ltd. Company
 CERTIFICATE OF AUTHORIZATION NO 8115
 30 SOUTH KELLER ROAD, SUITE 500
 ORLANDO, FL 32810

STATE OF FLORIDA DEPARTMENT OF TRANSPORTATION		
ROAD NO.	COUNTY	FINANCIAL PROJECT ID
	LAKE MARY SEMNOLE	412994-1-22-01

CENTRAL FLORIDA COMMUTER RAIL TRANSIT
**LAKE MARY STATION
 CONCEPT PLAN**

SHEET NO.



REVISIONS		
DATE	BY	DESCRIPTION

VHB
 Vanasse Hangen Brustlin, Inc.
 Engineers, Planners & Scientists
 135 W. Central Blvd., Suite 800
 Orlando, FL 32801 (407)839-4006

EarthTech
 A Tyco International Ltd. Company
 CERTIFICATE OF AUTHORIZATION NO 8115
 30 SOUTH KELLER ROAD, SUITE 500
 ORLANDO, FL 32810

STATE OF FLORIDA DEPARTMENT OF TRANSPORTATION		
ROAD NO.	COUNTY	FINANCIAL PROJECT ID
	LAKE MARY SEMHOLE	412994-1-22-01

CENTRAL FLORIDA COMMUTER RAIL TRANSIT
LAKE MARY STATION
CONCEPT PLAN

SHEET NO.



REVISIONS		
DATE	BY	DESCRIPTION

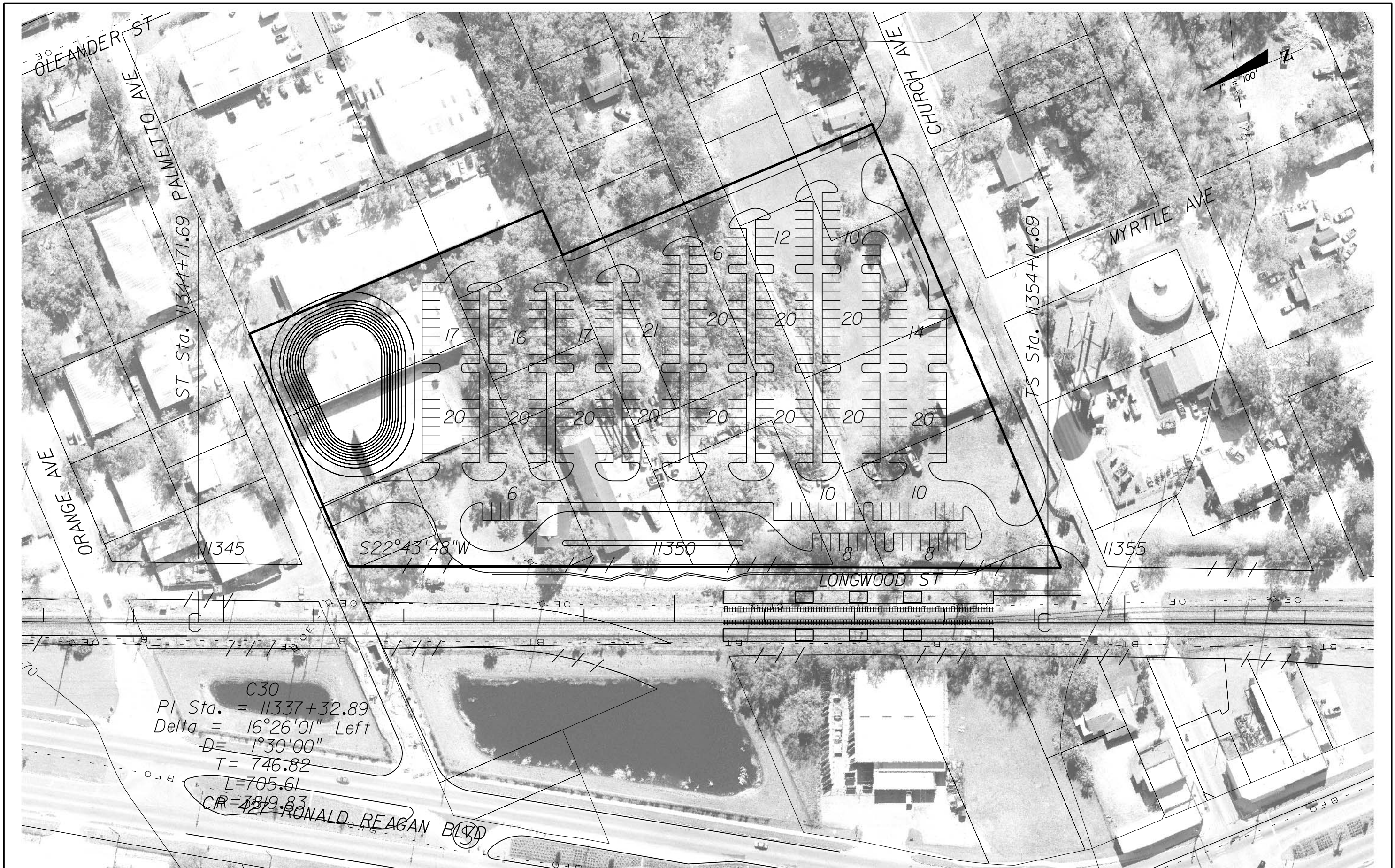
VHB Vanasse Hangen Brustlin, Inc.
 Engineers, Planners & Scientists
 135 W. Central Blvd., Suite 800
 Orlando, FL 32801 (407)839-4006

EarthTech
 A Tyco International Ltd. Company
 CERTIFICATE OF AUTHORIZATION NO 8115
 30 SOUTH KELLER ROAD, SUITE 500
 ORLANDO, FL 32810

STATE OF FLORIDA DEPARTMENT OF TRANSPORTATION		
ROAD NO.	COUNTY	FINANCIAL PROJECT ID
	LONGWOOD SEMINOLE	412994-1-22-01

CENTRAL FLORIDA COMMUTER RAIL TRANSIT
LONGWOOD STATION
CONCEPT PLAN

SHEET NO.



REVISIONS		
DATE	BY	DESCRIPTION

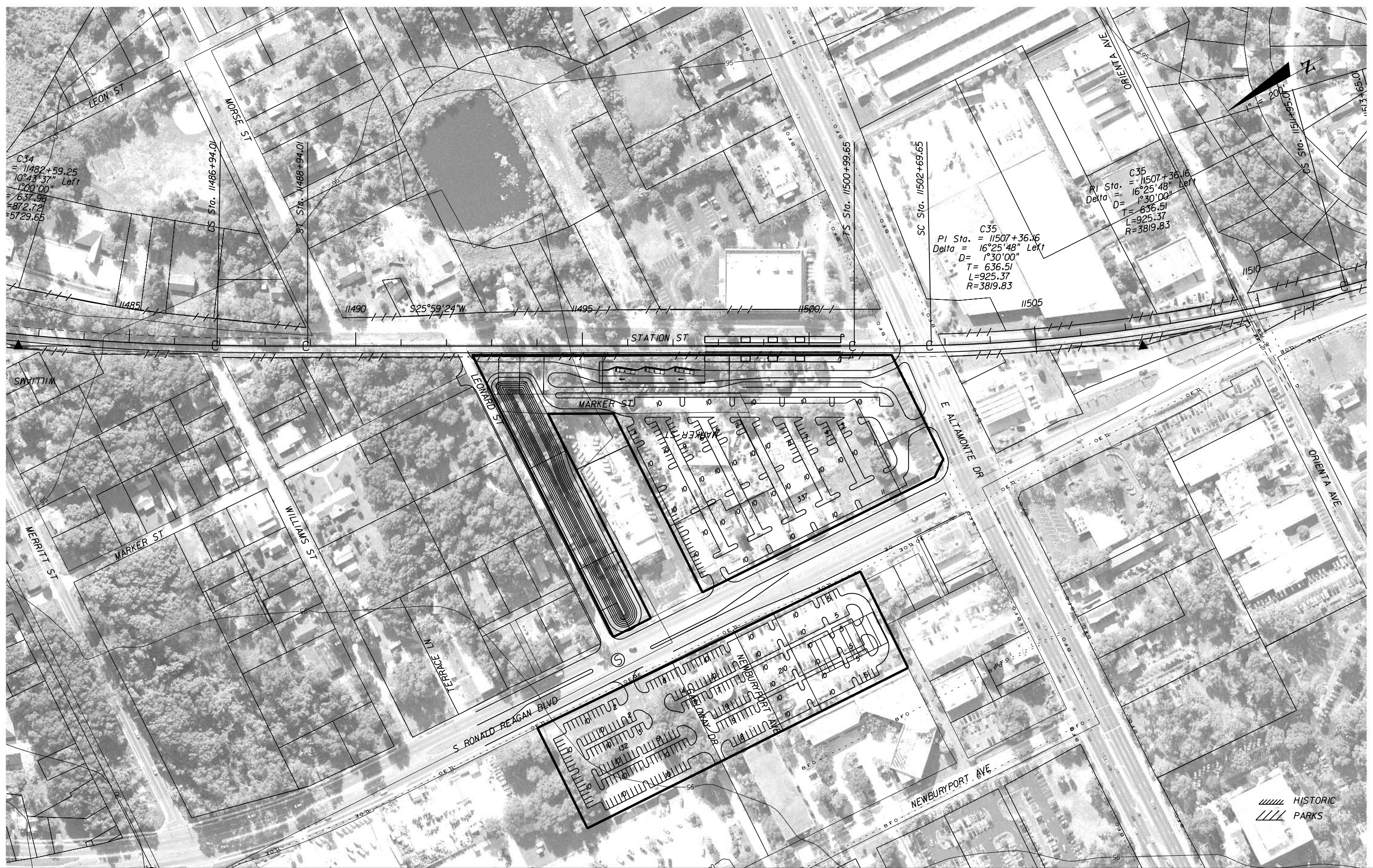
VHB
 Vanasse Hangen Brustlin, Inc.
 Engineers, Planners & Scientists
 135 W. Central Blvd., Suite 800
 Orlando, FL 32801 (407)839-4006

EarthTech
 A Tyco International Ltd. Company
 CERTIFICATE OF AUTHORIZATION NO 8115
 30 SOUTH KELLER ROAD, SUITE 500
 ORLANDO, FL 32810

STATE OF FLORIDA DEPARTMENT OF TRANSPORTATION		
ROAD NO.	COUNTY	FINANCIAL PROJECT ID
	LONGWOOD SEMINOLE	412994-1-22-01

CENTRAL FLORIDA COMMUTER RAIL TRANSIT
LONGWOOD STATION
CONCEPT PLAN

SHEET NO.



REVISIONS		
DATE	BY	DESCRIPTION

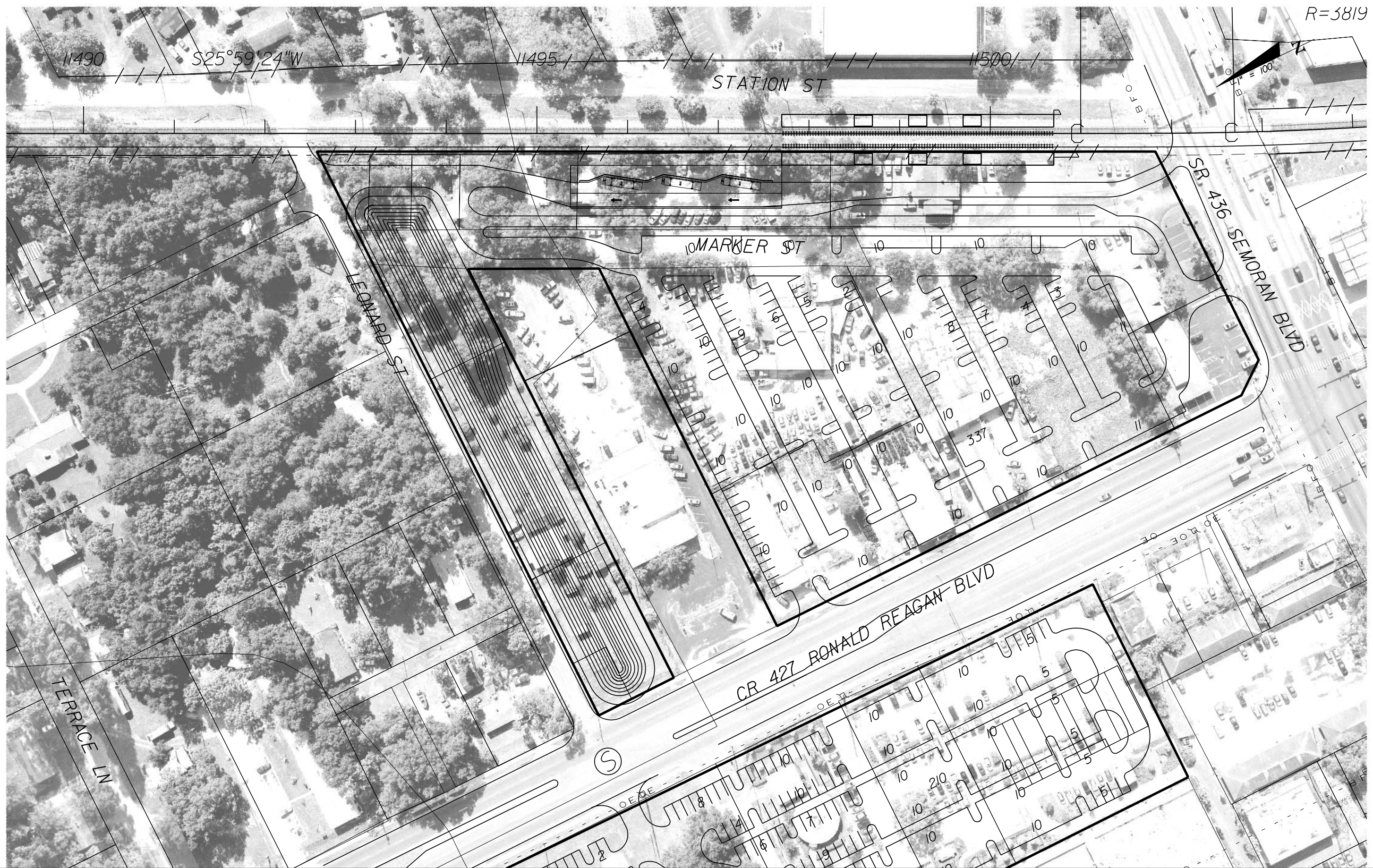
VHB
 Vanasse Hangen Brustlin, Inc.
 Engineers, Planners & Scientists
 135 W. Central Blvd., Suite 800
 Orlando, FL 32801 (407)839-4006

EarthTech
 A Tyco International Ltd. Company
 CERTIFICATE OF AUTHORIZATION NO 8115
 30 SOUTH KELLER ROAD, SUITE 500
 ORLANDO, FL 32810

STATE OF FLORIDA DEPARTMENT OF TRANSPORTATION		
ROAD NO.	COUNTY	FINANCIAL PROJECT ID
	ALTAMONTE SPRINGS SEMINOLE	412994-1-22-01

CENTRAL FLORIDA COMMUTER RAIL TRANSIT
ALTAMONTE SPRINGS STATION
CONCEPT PLAN

SHEET NO.



REVISIONS		
DATE	BY	DESCRIPTION

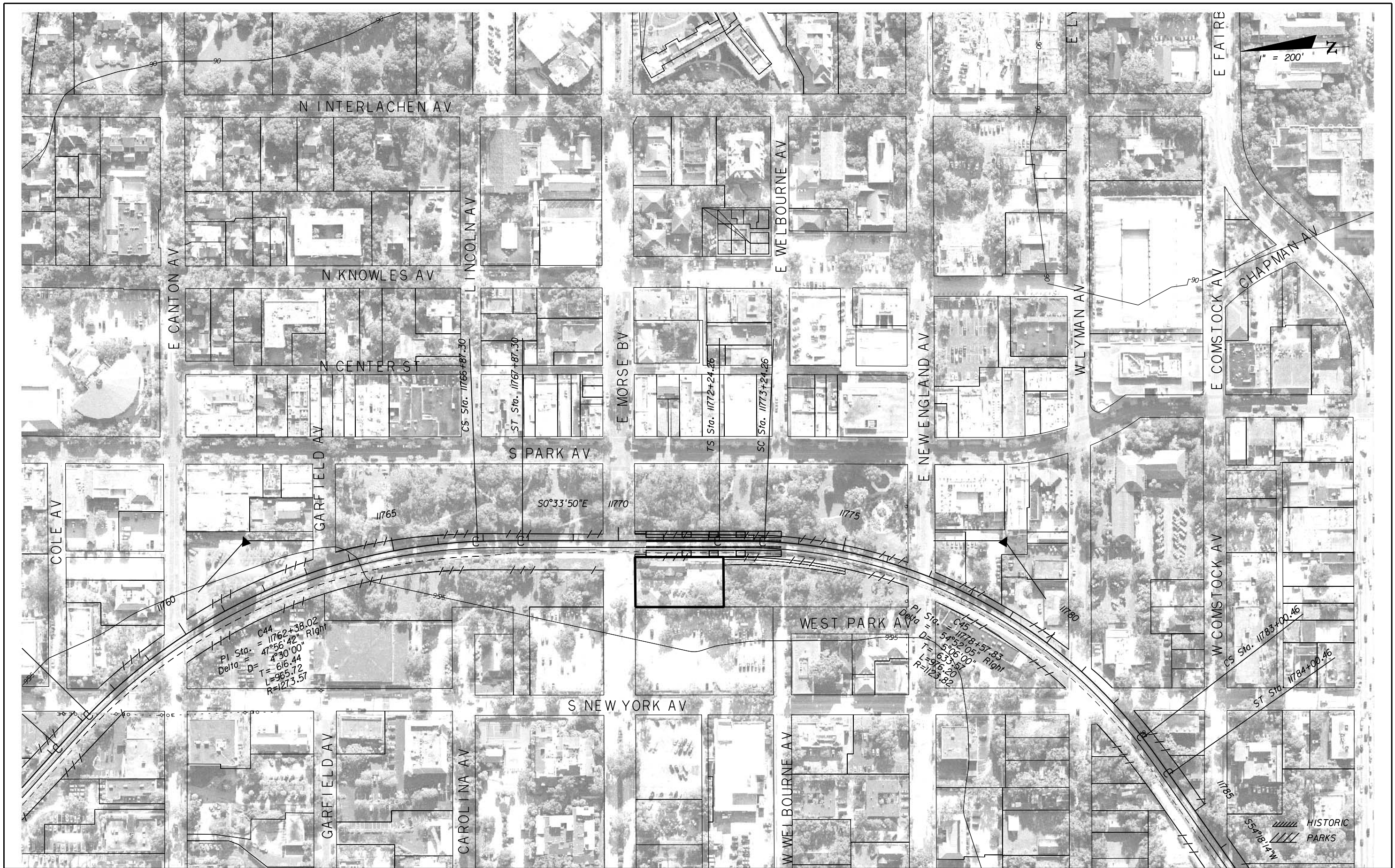
VHB Vanasse Hangen Brustlin, Inc.
 Engineers, Planners & Scientists
 135 W. Central Blvd., Suite 800
 Orlando, FL 32801 (407)839-4006

EarthTech
 A Tyco International Ltd. Company
 CERTIFICATE OF AUTHORIZATION NO 8115
 30 SOUTH KELLER ROAD, SUITE 500
 ORLANDO, FL 32810

STATE OF FLORIDA DEPARTMENT OF TRANSPORTATION		
ROAD NO.	COUNTY	FINANCIAL PROJECT ID
	ALTAMONTE SPRINGS SEMINOLE	412994-1-22-01

CENTRAL FLORIDA COMMUTER RAIL TRANSIT
ALTAMONTE SPRINGS STATION
CONCEPT PLAN

SHEET NO.



REVISIONS		
DATE	BY	DESCRIPTION

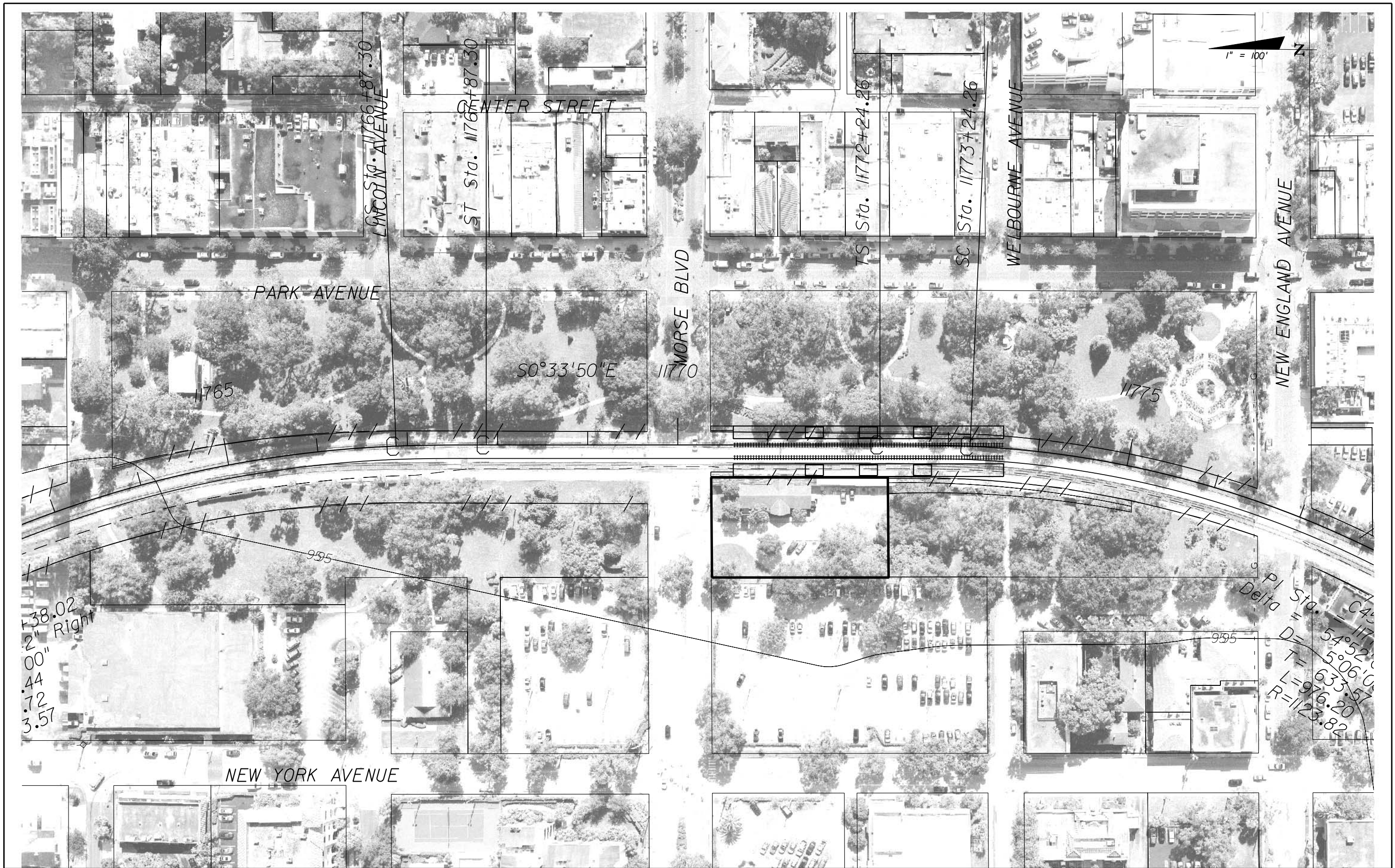
VHB
 Vanasse Hangen Brustlin, Inc.
 Engineers, Planners & Scientists
 135 W. Central Blvd., Suite 800
 Orlando, FL 32801 (407)839-4006

EarthTech
 A Tyco International Ltd. Company
 CERTIFICATE OF AUTHORIZATION NO 8115
 30 SOUTH KELLER ROAD, SUITE 500
 ORLANDO, FL 32810

STATE OF FLORIDA DEPARTMENT OF TRANSPORTATION		
ROAD NO.	COUNTY	FINANCIAL PROJECT ID
	WINTER PARK ORANGE	412994-1-22-01

CENTRAL FLORIDA COMMUTER RAIL TRANSIT
WINTER PARK STATION
CONCEPT PLAN

SHEET NO.



REVISIONS	
DATE	DESCRIPTION

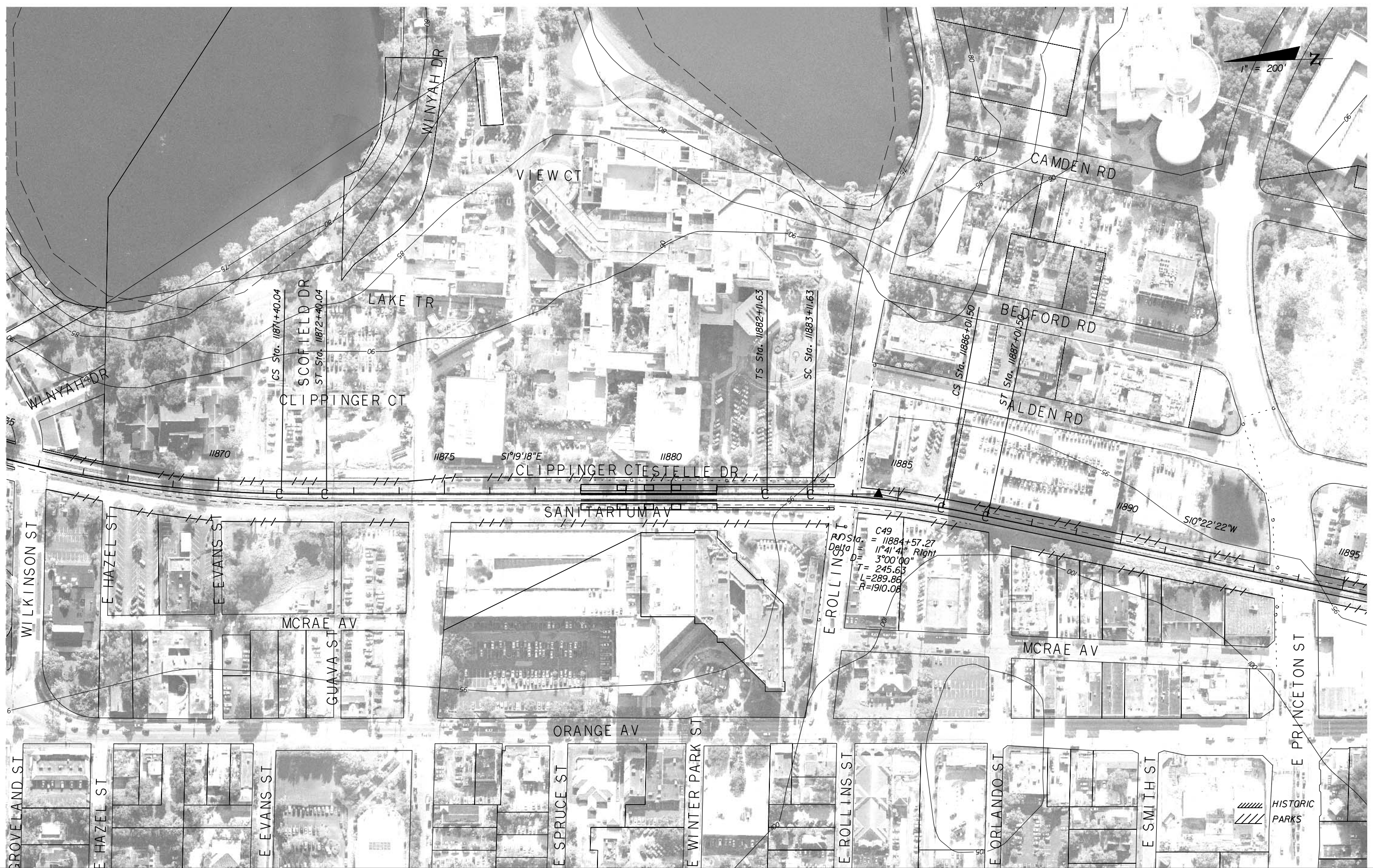
VHB
 Vanasse Hangen Brustlin, Inc.
 Engineers, Planners & Scientists
 135 W. Central Blvd., Suite 800
 Orlando, FL 32801 (407)839-4006

EarthTech
 A Tyco International Ltd. Company
 CERTIFICATE OF AUTHORIZATION NO 8115
 30 SOUTH KELLER ROAD, SUITE 500
 ORLANDO, FL 32810

STATE OF FLORIDA DEPARTMENT OF TRANSPORTATION		
ROAD NO.	COUNTY	FINANCIAL PROJECT ID
	WINTER PARK ORANGE	412994-1-22-01

CENTRAL FLORIDA COMMUTER RAIL TRANSIT
WINTER PARK STATION
CONCEPT PLAN

SHEET NO.



REVISIONS		
DATE	BY	DESCRIPTION

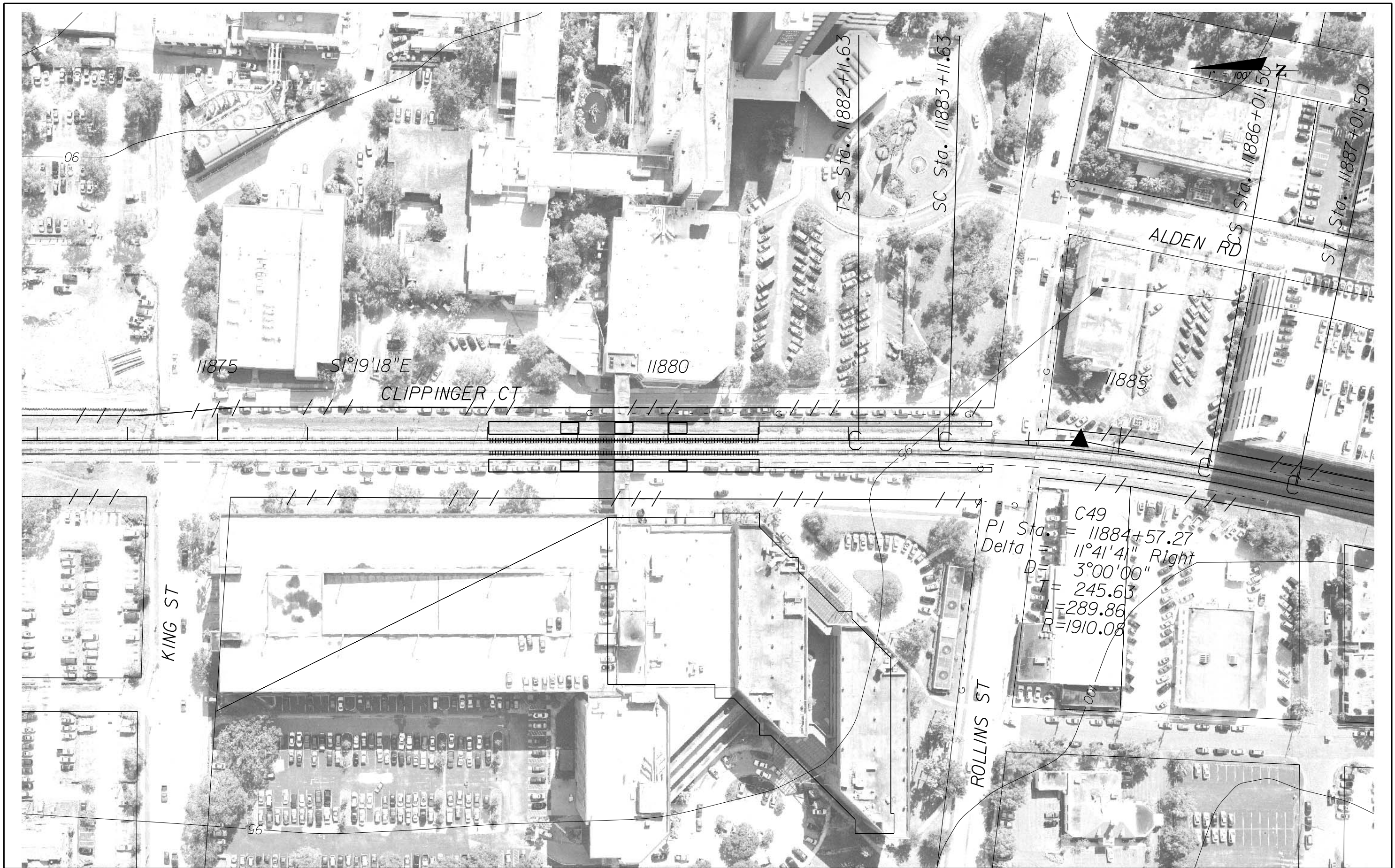
VHB Vanasse Hangen Brustlin, Inc.
 Engineers, Planners & Scientists
 135 W. Central Blvd., Suite 800
 Orlando, FL 32801 (407)839-4006

EarthTech
 A Tyco International Ltd. Company
 CERTIFICATE OF AUTHORIZATION NO 8115
 30 SOUTH KELLER ROAD, SUITE 500
 ORLANDO, FL 32810

STATE OF FLORIDA DEPARTMENT OF TRANSPORTATION		
ROAD NO.	COUNTY	FINANCIAL PROJECT ID
	ORLANDO ORANGE	412994-1-22-01

CENTRAL FLORIDA COMMUTER RAIL TRANSIT
FLORIDA HOSPITAL STATION
CONCEPT PLAN

SHEET NO.



REVISIONS		
DATE	BY	DESCRIPTION

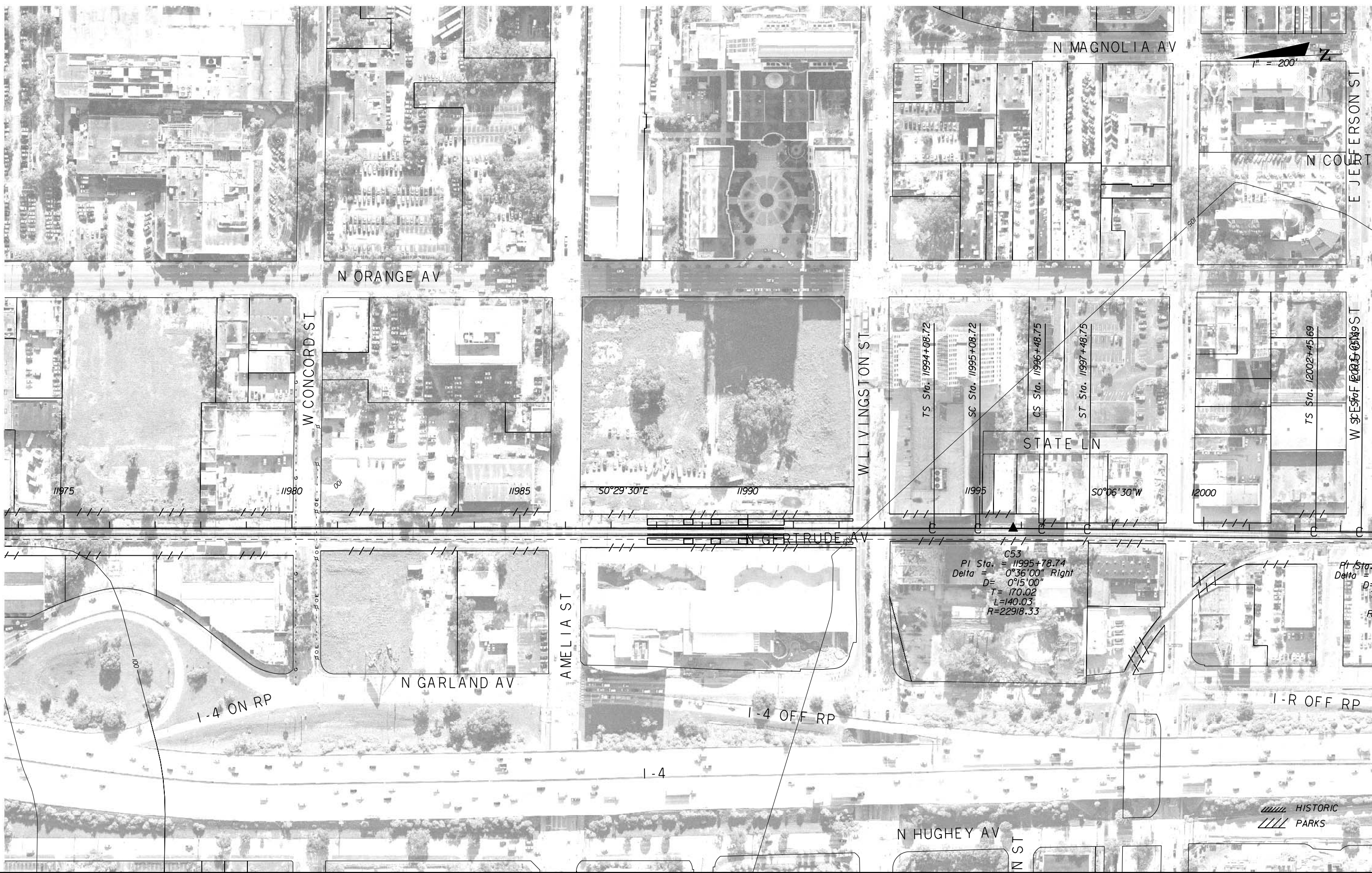
VHB Vanasse Hangen Brustlin, Inc.
 Engineers, Planners & Scientists
 135 W. Central Blvd., Suite 800
 Orlando, FL 32801 (407)839-4006

EarthTech
 A Tyco International Ltd. Company
 CERTIFICATE OF AUTHORIZATION NO 8115
 30 SOUTH KELLER ROAD, SUITE 500
 ORLANDO, FL 32810

STATE OF FLORIDA DEPARTMENT OF TRANSPORTATION		
ROAD NO.	COUNTY	FINANCIAL PROJECT ID
	ORLANDO ORANGE	412994-1-22-01

CENTRAL FLORIDA COMMUTER RAIL TRANSIT
FLORIDA HOSPITAL STATION
CONCEPT PLAN

SHEET NO.



REVISIONS		
DATE	BY	DESCRIPTION

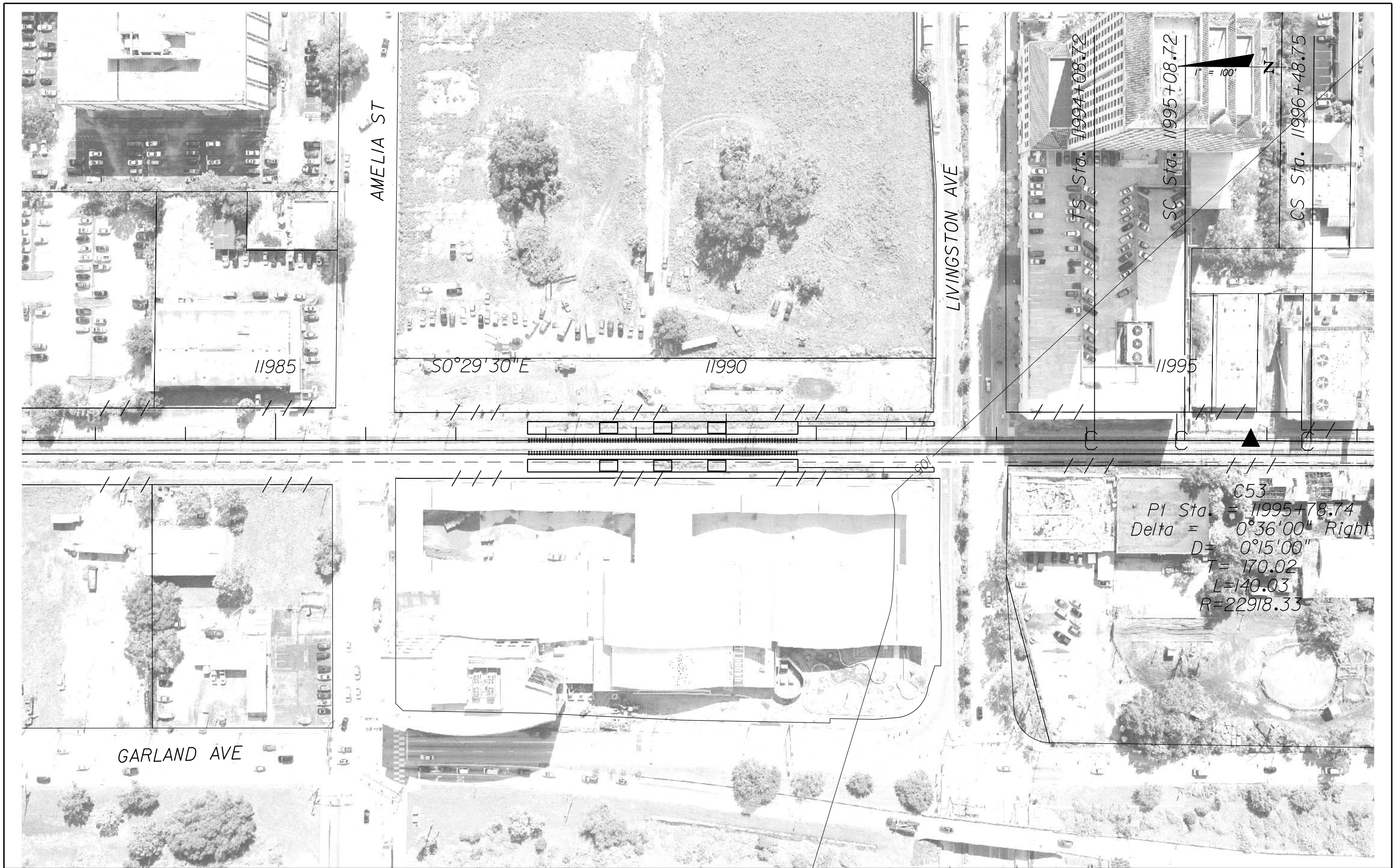
VHB Vanasse Hangen Brustlin, Inc.
 Engineers, Planners & Scientists
 135 W. Central Blvd., Suite 800
 Orlando, FL 32801 (407)839-4006

EarthTech
 A Tyco International Ltd. Company
 CERTIFICATE OF AUTHORIZATION NO 8115
 30 SOUTH KELLER ROAD, SUITE 500
 ORLANDO, FL 32810

STATE OF FLORIDA DEPARTMENT OF TRANSPORTATION		
ROAD NO.	COUNTY	FINANCIAL PROJECT ID
	ORLANDO ORANGE	412994-1-22-01

CENTRAL FLORIDA COMMUTER RAIL TRANSIT
LYNX CENTRAL STATION
CONCEPT PLAN

SHEET NO.



REVISIONS		
DATE	BY	DESCRIPTION

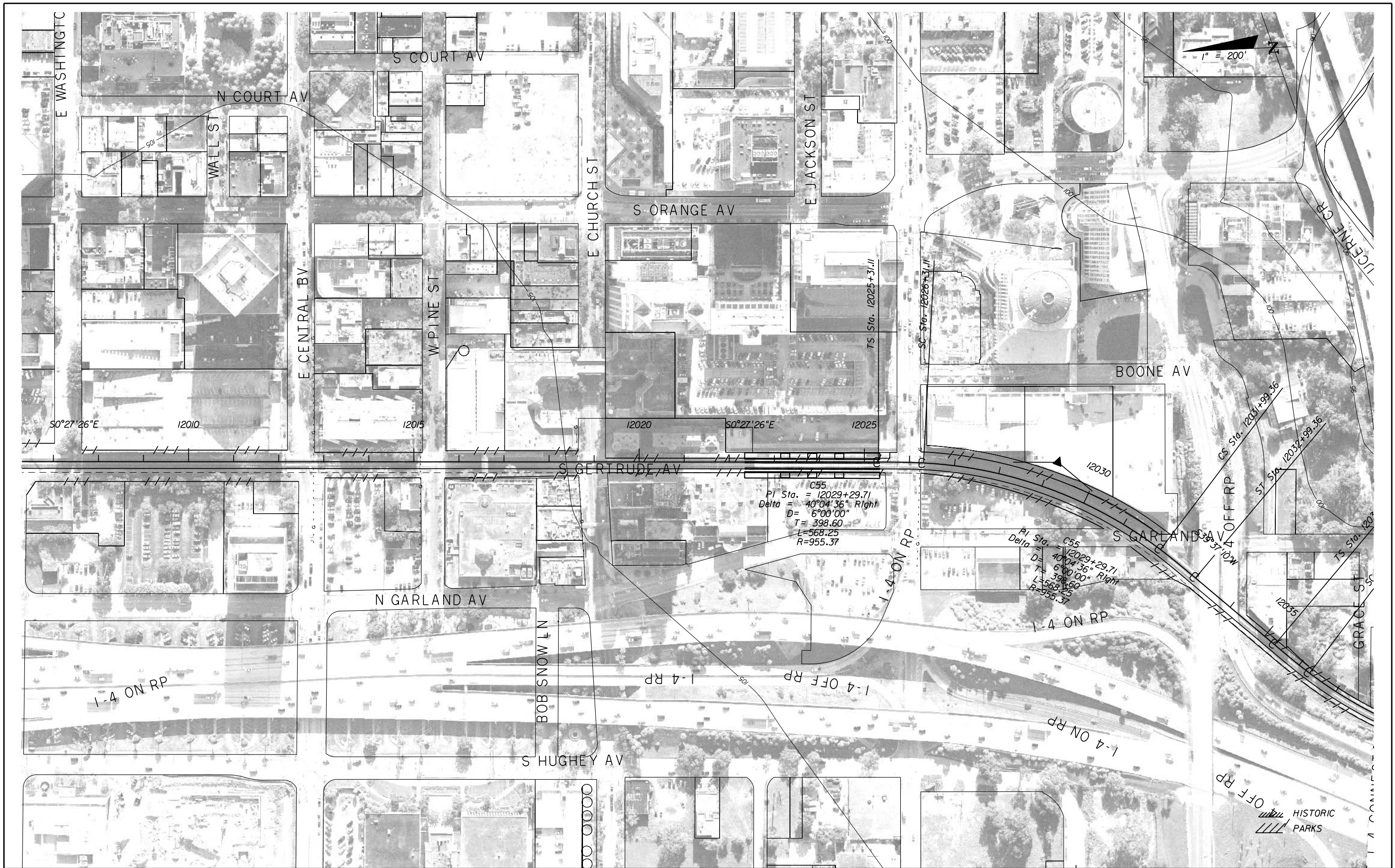
VHB Vanasse Hangen Brustlin, Inc.
 Engineers, Planners & Scientists
 135 W. Central Blvd., Suite 800
 Orlando, FL 32801 (407)839-4006

EarthTech
 A Tyco International Ltd. Company
 CERTIFICATE OF AUTHORIZATION NO 8115
 30 SOUTH KELLER ROAD, SUITE 500
 ORLANDO, FL 32810

STATE OF FLORIDA DEPARTMENT OF TRANSPORTATION		
ROAD NO.	COUNTY	FINANCIAL PROJECT ID
	ORLANDO ORANGE	412994-1-22-01

CENTRAL FLORIDA COMMUTER RAIL TRANSIT
LYNX CENTRAL STATION
CONCEPT PLAN

SHEET NO.



1" = 200'

REVISIONS		
DATE	BY	DESCRIPTION

VHB Vanasse Hangen Brustlin, Inc.
 Engineers, Planners & Scientists
 135 W. Central Blvd., Suite 800
 Orlando, FL 32801 (407)839-4006

EarthTech
 A Tyco International Ltd. Company
 CERTIFICATE OF AUTHORIZATION NO 8115
 30 SOUTH KELLER ROAD, SUITE 500
 ORLANDO, FL 32810

STATE OF FLORIDA DEPARTMENT OF TRANSPORTATION		
ROAD NO.	COUNTY	FINANCIAL PROJECT ID
	ORLANDO ORANGE	412994-1-22-01

CENTRAL FLORIDA COMMUTER RAIL TRANSIT
CHURCH STREET STATION
CONCEPT PLAN

SHEET NO.



REVISIONS		
DATE	BY	DESCRIPTION

VHB Vanasse Hangen Brustlin, Inc.
 Engineers, Planners & Scientists
 135 W. Central Blvd., Suite 800
 Orlando, FL 32801 (407)839-4006

EarthTech
 A Tyco International Ltd. Company
 CERTIFICATE OF AUTHORIZATION NO 8115
 30 SOUTH KELLER ROAD, SUITE 500
 ORLANDO, FL 32810

STATE OF FLORIDA DEPARTMENT OF TRANSPORTATION		
ROAD NO.	COUNTY	FINANCIAL PROJECT ID
	ORLANDO ORANGE	412994-1-22-01

CENTRAL FLORIDA COMMUTER RAIL TRANSIT
CHURCH STREET STATION
CONCEPT PLAN

SHEET NO.



REVISIONS		
DATE	BY	DESCRIPTION

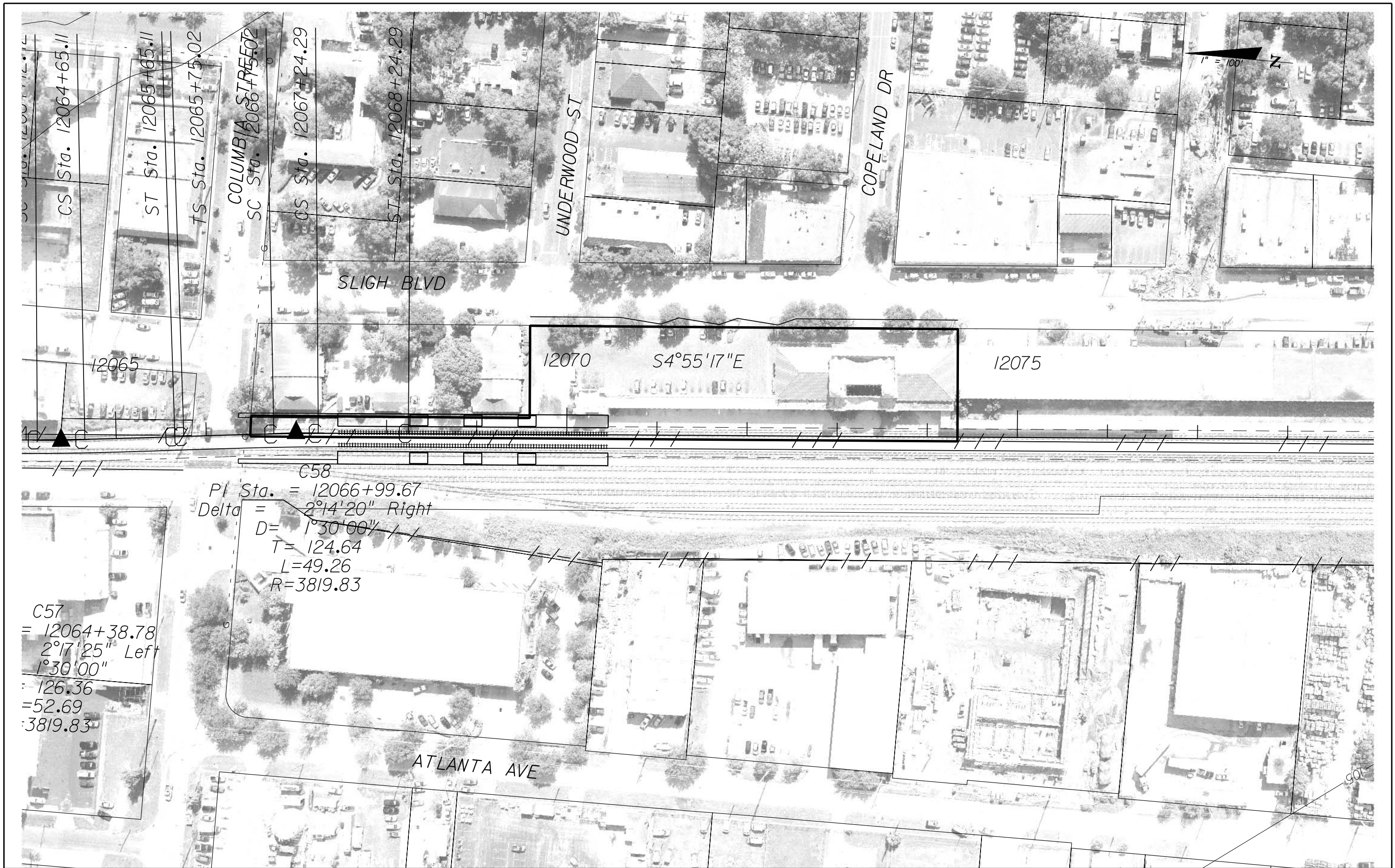
VHB Vanasse Hangen Brustlin, Inc.
 Engineers, Planners & Scientists
 135 W. Central Blvd., Suite 800
 Orlando, FL 32801 (407)839-4006

EarthTech
 A Tyco International Ltd. Company
 CERTIFICATE OF AUTHORIZATION NO 8115
 30 SOUTH KELLER ROAD, SUITE 500
 ORLANDO, FL 32810

STATE OF FLORIDA DEPARTMENT OF TRANSPORTATION		
ROAD NO.	COUNTY	FINANCIAL PROJECT ID
	ORLANDO ORANGE	412994-1-22-01

CENTRAL FLORIDA COMMUTER RAIL TRANSIT
ORLANDO AMTRAK STATION
CONCEPT PLAN

SHEET NO.



REVISIONS		
DATE	BY	DESCRIPTION

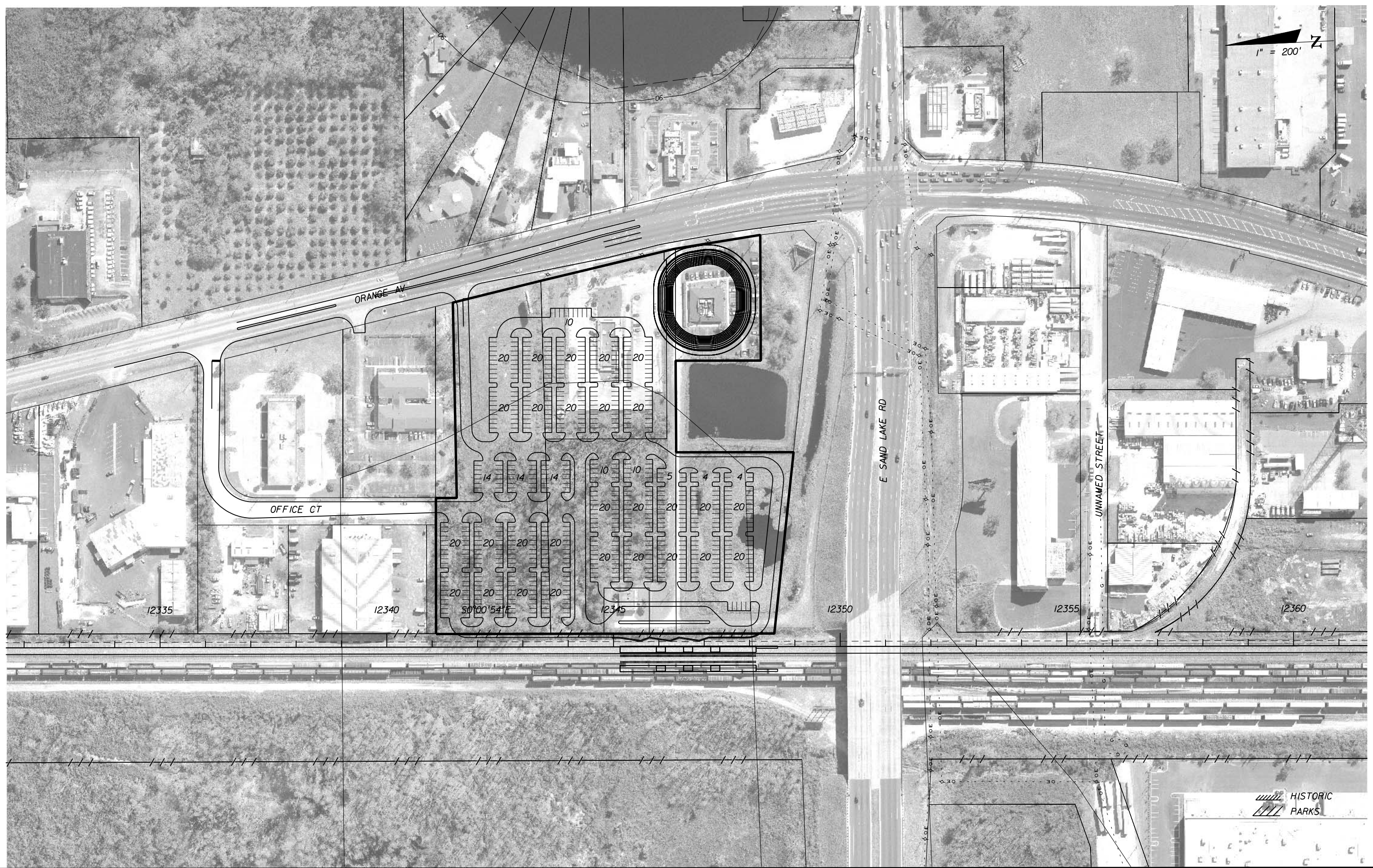
VHB
 Vanasse Hangen Brustlin, Inc.
 Engineers, Planners & Scientists
 135 W. Central Blvd., Suite 800
 Orlando, FL 32801 (407)839-4006

EarthTech
 A Tyco International Ltd. Company
 CERTIFICATE OF AUTHORIZATION NO 8115
 30 SOUTH KELLER ROAD, SUITE 500
 ORLANDO, FL 32810

STATE OF FLORIDA DEPARTMENT OF TRANSPORTATION		
ROAD NO.	COUNTY	FINANCIAL PROJECT ID
	ORLANDO ORANGE	412994-1-22-01

CENTRAL FLORIDA COMMUTER RAIL TRANSIT
ORLANDO AMTRAK STATION
CONCEPT PLAN

SHEET NO.
 50



REVISIONS		
DATE	BY	DESCRIPTION

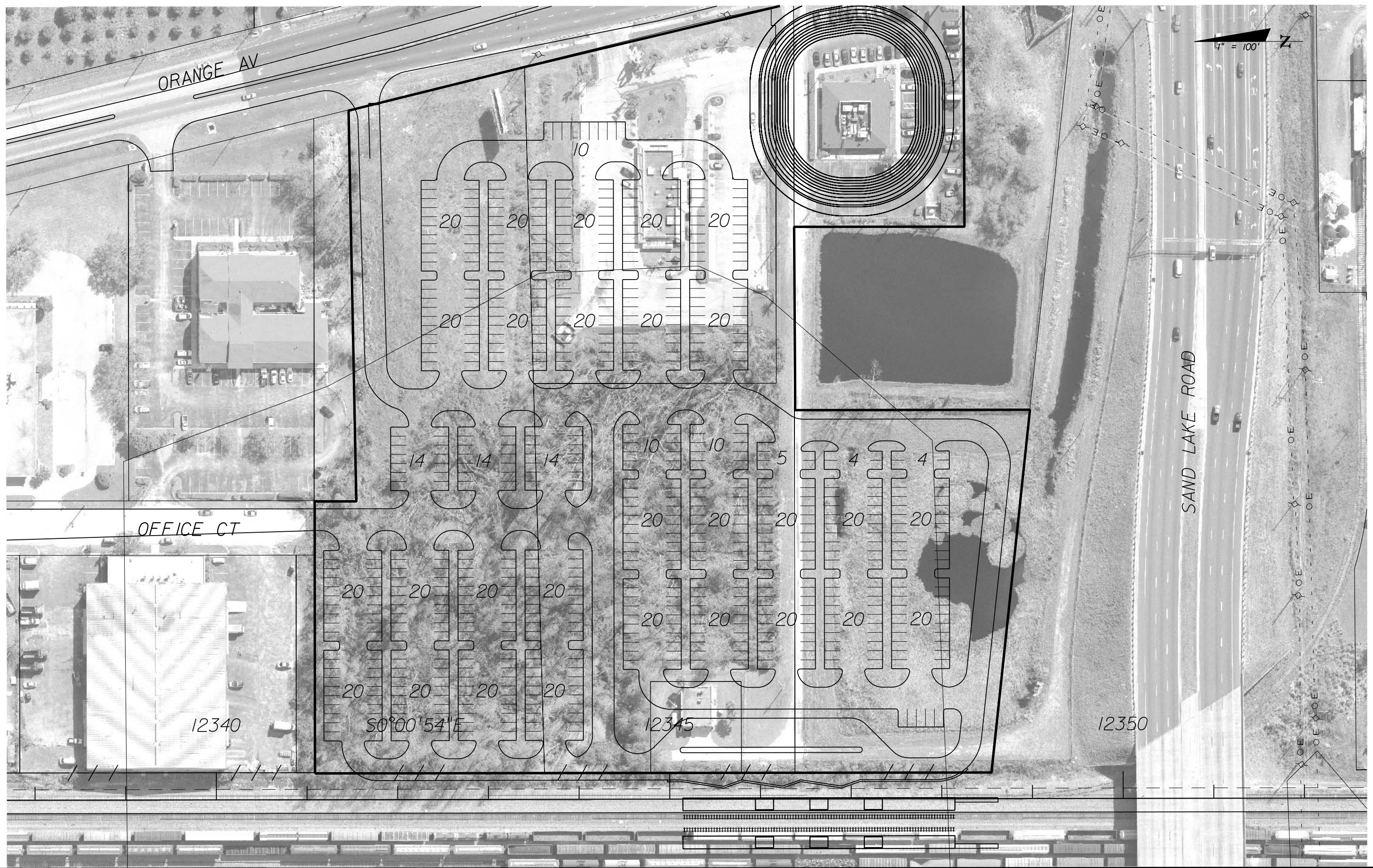
VHB Vanasse Hangen Brustlin, Inc.
 Engineers, Planners & Scientists
 135 W. Central Blvd., Suite 800
 Orlando, FL 32801 (407)839-4006

EarthTech
 A Tyco International Ltd. Company
 CERTIFICATE OF AUTHORIZATION NO 8115
 30 SOUTH KELLER ROAD, SUITE 500
 ORLANDO, FL 32810

STATE OF FLORIDA DEPARTMENT OF TRANSPORTATION		
ROAD NO.	COUNTY	FINANCIAL PROJECT ID
	UNINCORPORATED ORANGE	412994-1-22-01

CENTRAL FLORIDA COMMUTER RAIL TRANSIT
SAND LAKE ROAD STATION
CONCEPT PLAN

SHEET NO.



REVISIONS		
DATE	BY	DESCRIPTION

VHB Vanasse Hangen Brustlin, Inc.
 Engineers, Planners & Scientists
 135 W. Central Blvd., Suite 800
 Orlando, FL 32801 (407)839-4006

EarthTech
 A Tyco International Ltd. Company
 CERTIFICATE OF AUTHORIZATION NO 8115
 30 SOUTH KELLER ROAD, SUITE 500
 ORLANDO, FL 32810

STATE OF FLORIDA DEPARTMENT OF TRANSPORTATION		
ROAD NO.	COUNTY	FINANCIAL PROJECT ID
	UNINCORPORATED ORANGE	412994-1-22-01

CENTRAL FLORIDA COMMUTER RAIL TRANSIT
SAND LAKE ROAD STATION
CONCEPT PLAN

SHEET NO.



REVISIONS		
DATE	BY	DESCRIPTION

VHB
 Vanasse Hangen Brustlin, Inc.
 Engineers, Planners & Scientists
 135 W. Central Blvd., Suite 800
 Orlando, FL 32801 (407)839-4006

EarthTech
 A Tyco International Ltd. Company
 CERTIFICATE OF AUTHORIZATION NO 8115
 30 SOUTH KELLER ROAD, SUITE 500
 ORLANDO, FL 32810

STATE OF FLORIDA DEPARTMENT OF TRANSPORTATION		
ROAD NO.	COUNTY	FINANCIAL PROJECT ID
	UNINCORPORATED OSGEOOLA	4I2994-1-22-01

CENTRAL FLORIDA COMMUTER RAIL TRANSIT
MEADOW WOODS STATION
CONCEPT PLAN

SHEET NO.



REVISIONS		
DATE	BY	DESCRIPTION

VHB Vanasse Hangen Brustlin, Inc.
 Engineers, Planners & Scientists
 135 W. Central Blvd., Suite 800
 Orlando, FL 32801 (407)839-4006

EarthTech
 A Tyco International Ltd. Company
 CERTIFICATE OF AUTHORIZATION NO 8115
 30 SOUTH KELLER ROAD, SUITE 500
 ORLANDO, FL 32810

STATE OF FLORIDA DEPARTMENT OF TRANSPORTATION		
ROAD NO.	COUNTY	FINANCIAL PROJECT ID
	UNINCORPORATED OSGEOLA	412994-1-22-01

CENTRAL FLORIDA COMMUTER RAIL TRANSIT
MEADOW WOODS STATION
CONCEPT PLAN

SHEET NO.



REVISIONS		
DATE	BY	DESCRIPTION

VHB Vanasse Hangen Brustlin, Inc.
 Engineers, Planners & Scientists
 135 W. Central Blvd., Suite 800
 Orlando, FL 32801 (407)839-4006

EarthTech
 A Tyco International Ltd. Company
 CERTIFICATE OF AUTHORIZATION NO 8115
 30 SOUTH KELLER ROAD, SUITE 500
 ORLANDO, FL 32810

STATE OF FLORIDA DEPARTMENT OF TRANSPORTATION		
ROAD NO.	COUNTY	FINANCIAL PROJECT ID
	UNINCORPORATED OSCEOLA	412994-1-22-01

CENTRAL FLORIDA COMMUTER RAIL TRANSIT
OSCEOLA PARKWAY STATION
CONCEPT PLAN

SHEET NO.



REVISIONS		
DATE	BY	DESCRIPTION

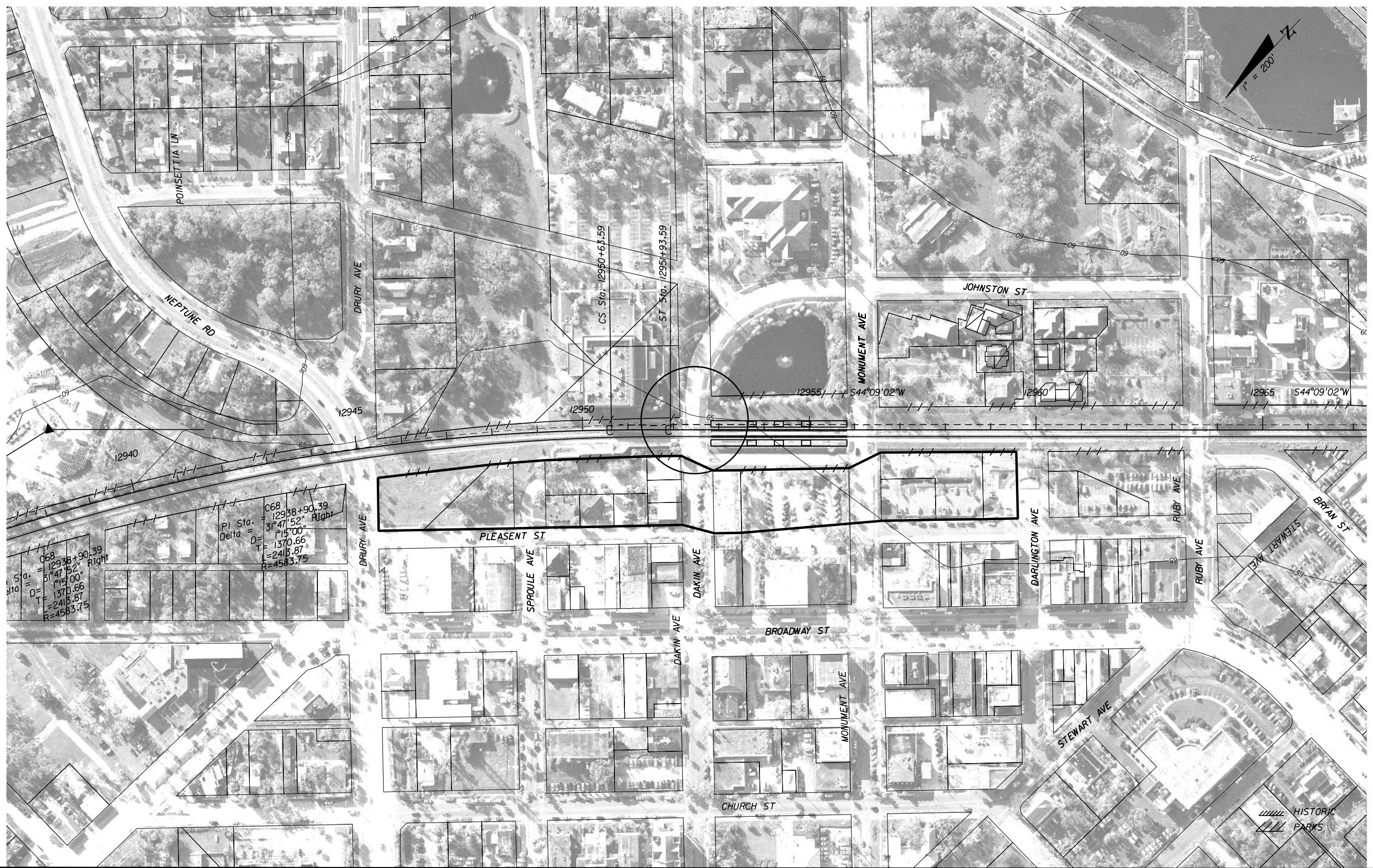
VHB Vanasse Hangen Brustlin, Inc.
 Engineers, Planners & Scientists
 135 W. Central Blvd., Suite 800
 Orlando, FL 32801 (407)839-4006

EarthTech
 A Tyco International Ltd. Company
 CERTIFICATE OF AUTHORIZATION NO 8115
 30 SOUTH KELLER ROAD, SUITE 500
 ORLANDO, FL 32810

STATE OF FLORIDA DEPARTMENT OF TRANSPORTATION		
ROAD NO.	COUNTY	FINANCIAL PROJECT ID
	UNINCORPORATED OSCEOLA	412994-1-22-01

CENTRAL FLORIDA COMMUTER RAIL TRANSIT
OSCEOLA PARKWAY STATION
CONCEPT PLAN

SHEET NO.



C68
 PI Sta. = 12938+90.39
 Delta = 3°47'52" Right
 D = 1370.66
 T = 2413.87
 R = 4583.75

REVISIONS		
DATE	BY	DESCRIPTION

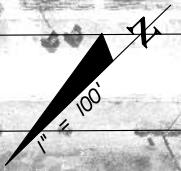
VHB
 Vanasse Hangen Brustlin, Inc.
 Engineers, Planners & Scientists
 135 W. Central Blvd., Suite 800
 Orlando, FL 32801 (407)839-4006

EarthTech
 A Tyco International Ltd. Company
 CERTIFICATE OF AUTHORIZATION NO 8115
 30 SOUTH KELLER ROAD, SUITE 500
 ORLANDO, FL 32810

STATE OF FLORIDA DEPARTMENT OF TRANSPORTATION		
ROAD NO.	COUNTY	FINANCIAL PROJECT ID
	KISSIMEE OSCEOLA	412994-1-22-01

CENTRAL FLORIDA COMMUTER RAIL TRANSIT
KISSIMEE AMTRAK STATION
CONCEPT PLAN

SHEET
 NO.



REVISIONS	
DATE	DESCRIPTION

VHB Vanasse Hangen Brustlin, Inc.
 Engineers, Planners & Scientists
 135 W. Central Blvd., Suite 800
 Orlando, FL 32801 (407)839-4006

EarthTech
 A Tyco International Ltd. Company
 CERTIFICATE OF AUTHORIZATION NO 8115
 30 SOUTH KELLER ROAD, SUITE 500
 ORLANDO, FL 32810

STATE OF FLORIDA DEPARTMENT OF TRANSPORTATION		
ROAD NO.	COUNTY	FINANCIAL PROJECT ID
	KISSIMMEE OSCEOLA	412994-1-22-01

CENTRAL FLORIDA COMMUTER RAIL TRANSIT
KISSIMMEE AMTRAK STATION
CONCEPT PLAN

SHEET NO.



REVISIONS		
DATE	BY	DESCRIPTION

VHB Vanasse Hangen Brustlin, Inc.
 Engineers, Planners & Scientists
 135 W. Central Blvd., Suite 800
 Orlando, FL 32801 (407)839-4006

EarthTech
 A Tyco International Ltd. Company
 CERTIFICATE OF AUTHORIZATION NO 8115
 30 SOUTH KELLER ROAD, SUITE 500
 ORLANDO, FL 32810

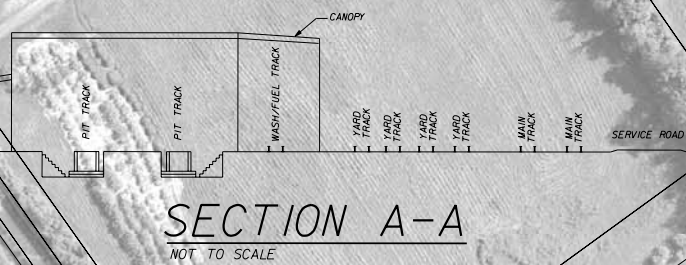
STATE OF FLORIDA DEPARTMENT OF TRANSPORTATION		
ROAD NO.	COUNTY	FINANCIAL PROJECT ID
	UNINCORPORATED OSCEOLA	412994-1-22-01

CENTRAL FLORIDA COMMUTER RAIL TRANSIT
POINCIANA INDUSTRIAL STATION
CONCEPT PLAN

SHEET NO.



PLAN
SCALE: 1"=200'-0"



QUANTITIES:
 10464 FT - TRACK*
 16 - #9 TURNOUTS
 4 - #10 TURNOUTS
 13440 SF - PARKING
 36250 SF - BUILDING
 117788 SF - ROADWAY
 43.0 AC - EXISTING RAND YARD
 19.0 AC - PROPOSED VSME
 * QUANTITY INCLUDES TURNOUT TRACK
 DOES NOT INCLUDE MAINLINE TRACK

YARD DESIGN CRITERIA:	BASIS OF DESIGN:
34 - DMU'S (FULL BUILD FLEET)	
4 STORAGE TRACKS	
15'-0" TRACK CENTERS	
MINIMUM RADIUS = 637.27 FT (Dc = 9°)	
NO. 9 TURNOUTS IN YARD	
NO. 10 TURNOUTS ON MAINLINE	
YARD SHOP BUILDING: 145'X250'	

REVISIONS			
DATE	BY	DESCRIPTION	

VHIB Vanasse Hangen Brustlin, Inc.
 Engineers, Planners & Scientists
 135 W. Central Blvd., Suite 800
 Orlando, FL 32801 (407)839-4006

EarthTech
 A Tyco International Ltd. Company
 CERTIFICATE OF AUTHORIZATION NO 8115
 30 SOUTH KELLER ROAD, SUITE 500
 ORLANDO, FL 32810

STATE OF FLORIDA DEPARTMENT OF TRANSPORTATION		
ROAD NO.	COUNTY	FINANCIAL PROJECT ID
		412994-1-22-01

CENTRAL FLORIDA COMMUTER RAIL TRANSIT
**RAND YARD
AND SHOP**

SHEET NO.



REVISIONS		
DATE	BY	DESCRIPTION

VHIB Vanasse Hangen Brustlin, Inc.
 Engineers, Planners & Scientists
 135 W. Central Blvd., Suite 800
 Orlando, FL 32801 (407)839-4006

EarthTech
 A Tyco International Ltd. Company
 CERTIFICATE OF AUTHORIZATION NO 8115
 30 SOUTH KELLER ROAD, SUITE 500
 ORLANDO, FL 32810

STATE OF FLORIDA DEPARTMENT OF TRANSPORTATION		
ROAD NO.	COUNTY	FINANCIAL PROJECT ID
	UNINCORPORATED VOLUSIA	412994-1-22-01

CENTRAL FLORIDA COMMUTER RAIL TRANSIT
SAXON BLVD LA YOVER
CONCEPT PLAN

SHEET NO.



REVISIONS		
DATE	BY	DESCRIPTION

VHB
 Vanasse Hangen Brustlin, Inc.
 Engineers, Planners & Scientists
 135 W. Central Blvd., Suite 800
 Orlando, FL 32801 (407)839-4006

EarthTech
 A Tyco International Ltd. Company
 CERTIFICATE OF AUTHORIZATION NO 8115
 30 SOUTH KELLER ROAD, SUITE 500
 ORLANDO, FL 32810

STATE OF FLORIDA DEPARTMENT OF TRANSPORTATION		
ROAD NO.	COUNTY	FINANCIAL PROJECT ID
	ORLANDO ORANGE	412994-1-22-01

CENTRAL FLORIDA COMMUTER RAIL TRANSIT
**ORLANDO AMTRAK LAYOVER
 CONCEPT PLAN**

SHEET NO.
 12



REVISIONS		
DATE	BY	DESCRIPTION

VHIB Vanasse Hangen Brustlin, Inc.
 Engineers, Planners & Scientists
 135 W. Central Blvd., Suite 800
 Orlando, FL 32801 (407)839-4006

EarthTech
 A Tyco International Ltd. Company
 CERTIFICATE OF AUTHORIZATION NO 8115
 30 SOUTH KELLER ROAD, SUITE 500
 ORLANDO, FL 32810

STATE OF FLORIDA DEPARTMENT OF TRANSPORTATION		
ROAD NO.	COUNTY	FINANCIAL PROJECT ID
	UNINCORPORATED OSCEOLA	4/2994-1-22-01

CENTRAL FLORIDA COMMUTER RAIL TRANSIT
POINCIANA LAYOVER
CONCEPT PLAN

SHEET NO.